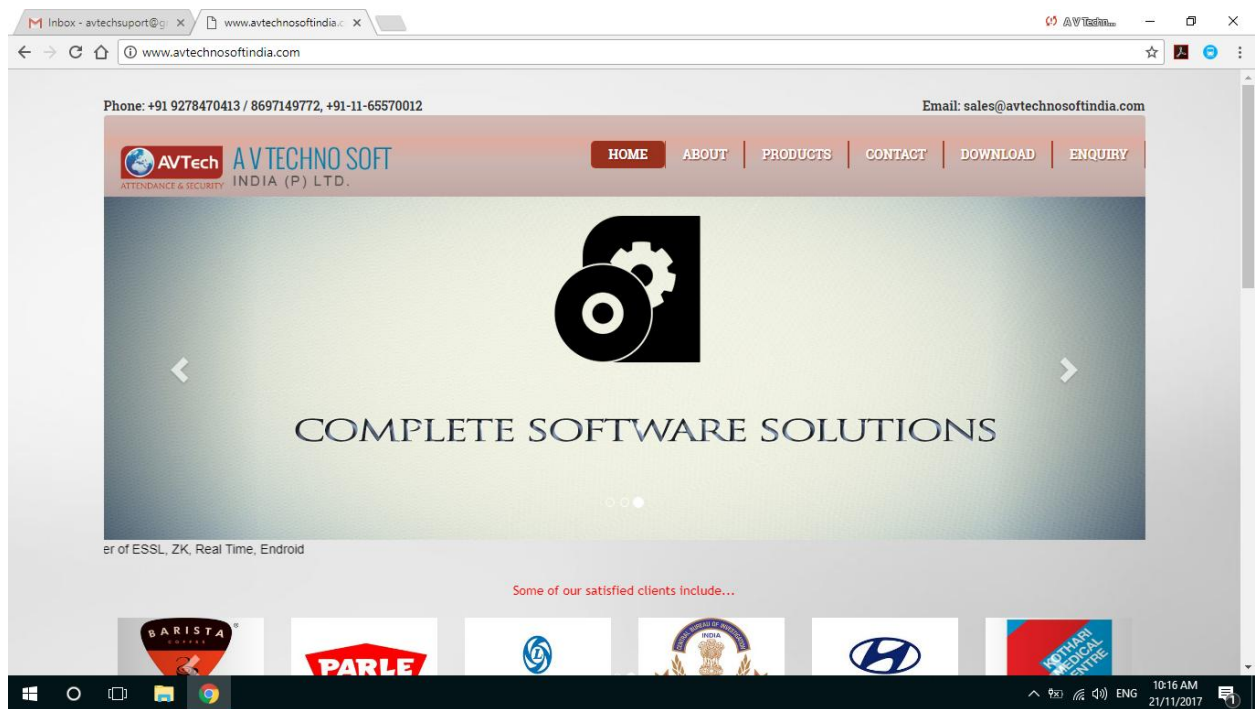


# DOCUMENTS FOR ECLOCKPRO INSTALLATION

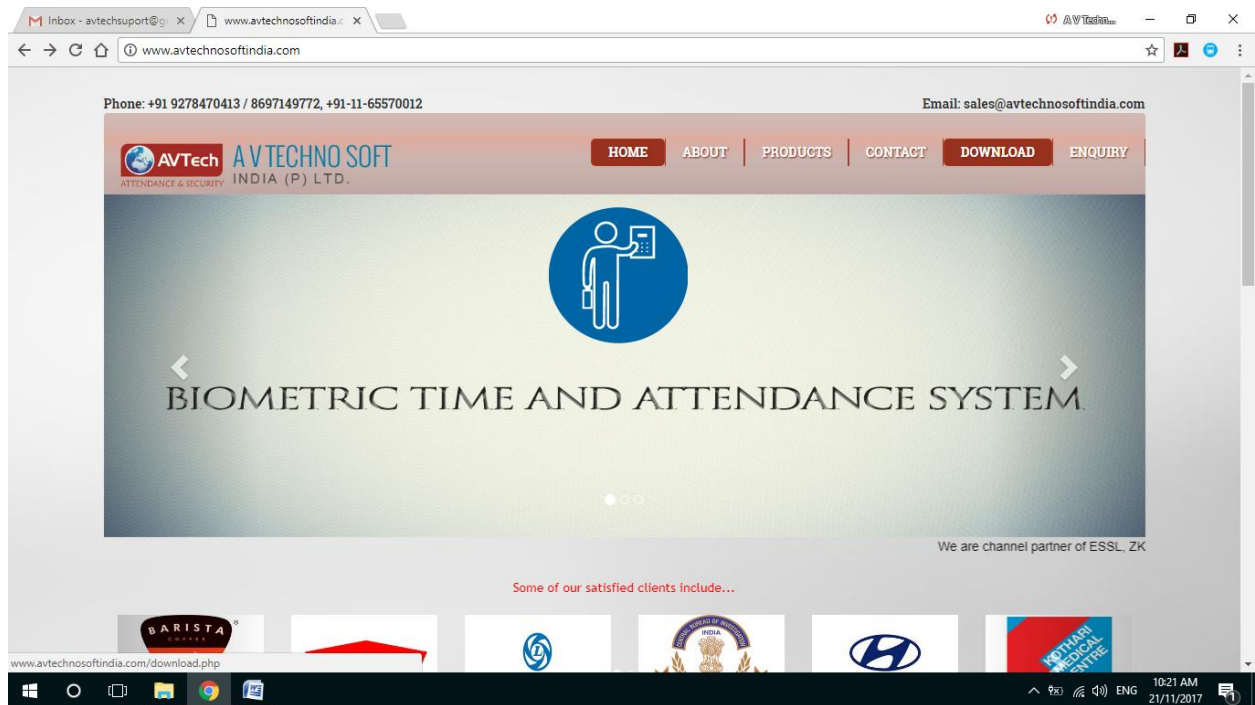
Follow the steps:

Step1:- DOWNLOAD AND INSTALL SQL.

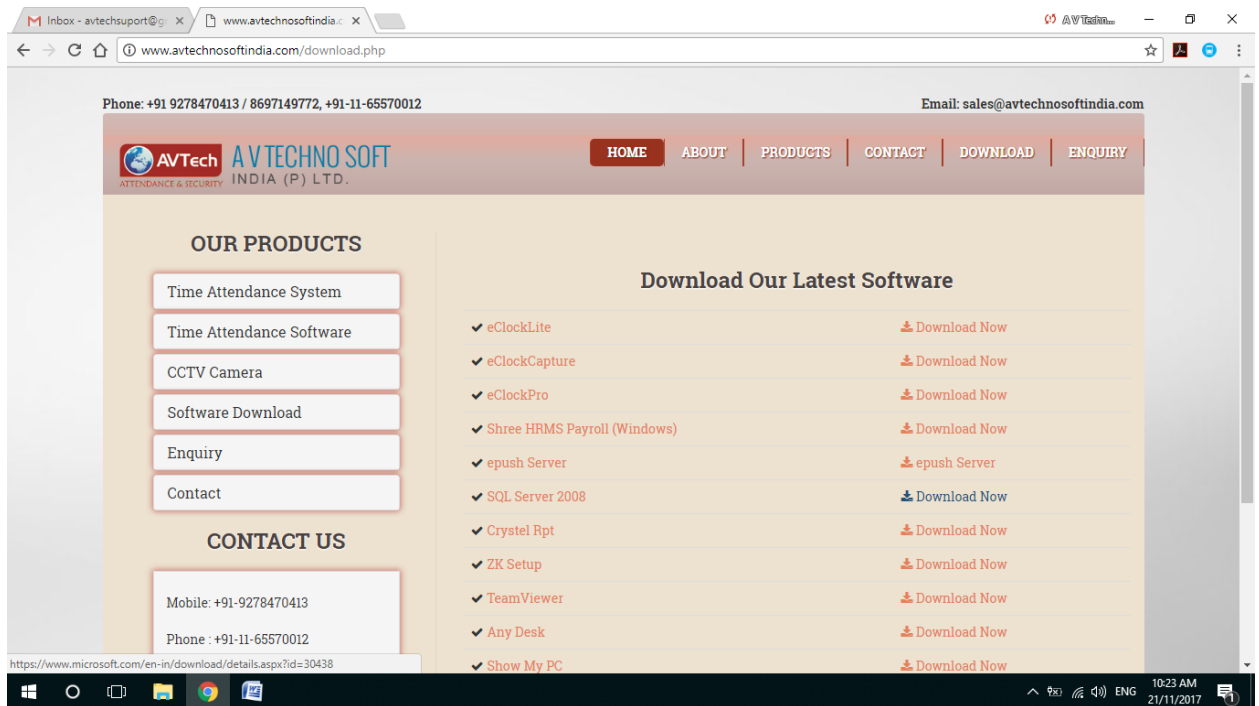
- Click on this website: <http://www.avtechnosoftindia.com>

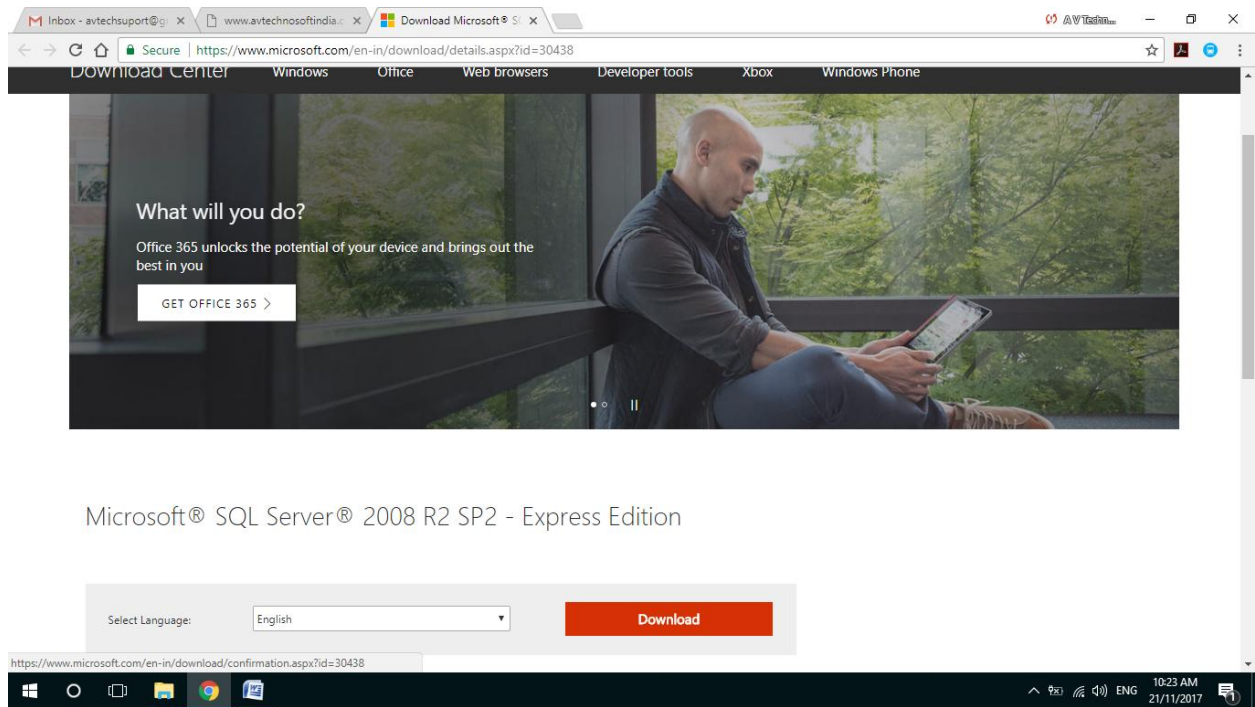


- Then Download

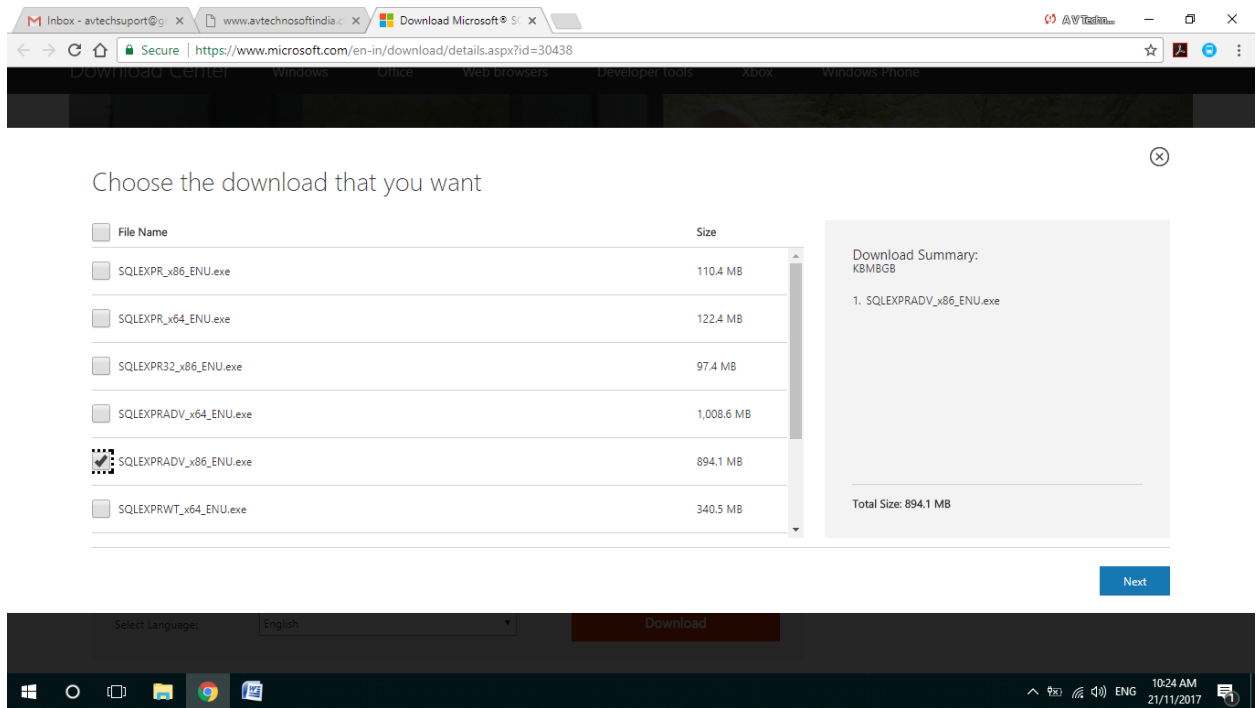


- SQL Sever 2008 and Click Download now

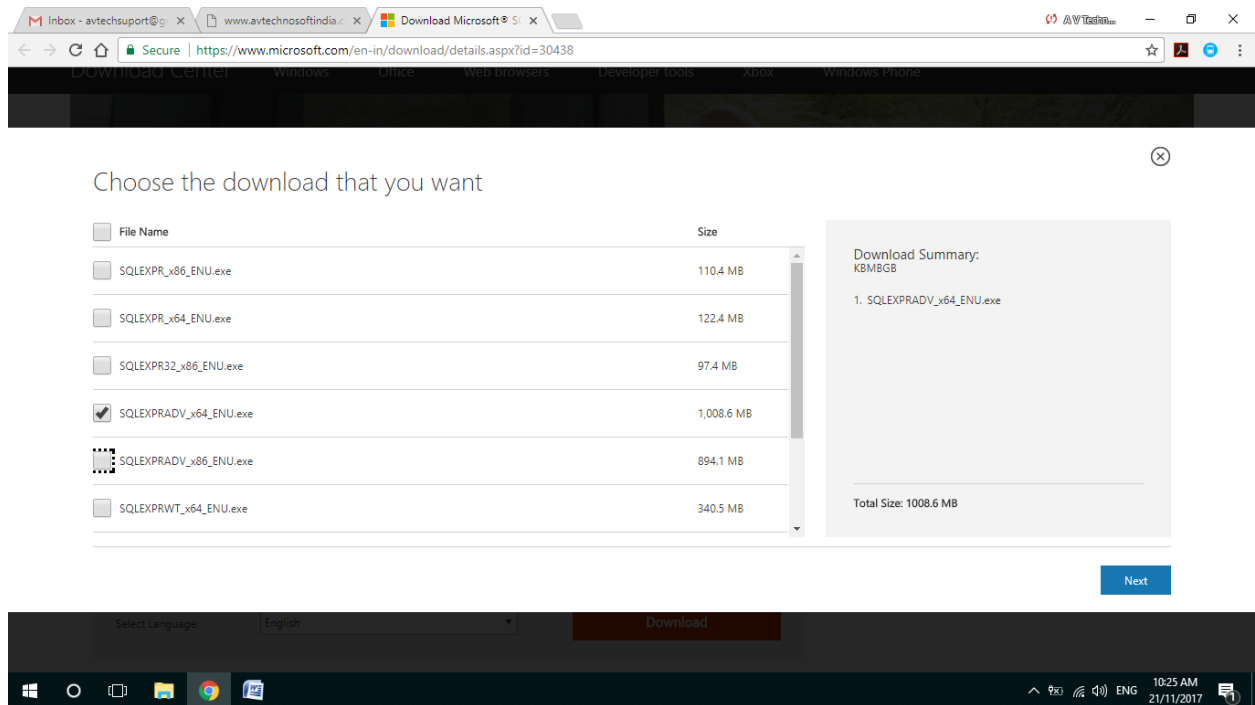




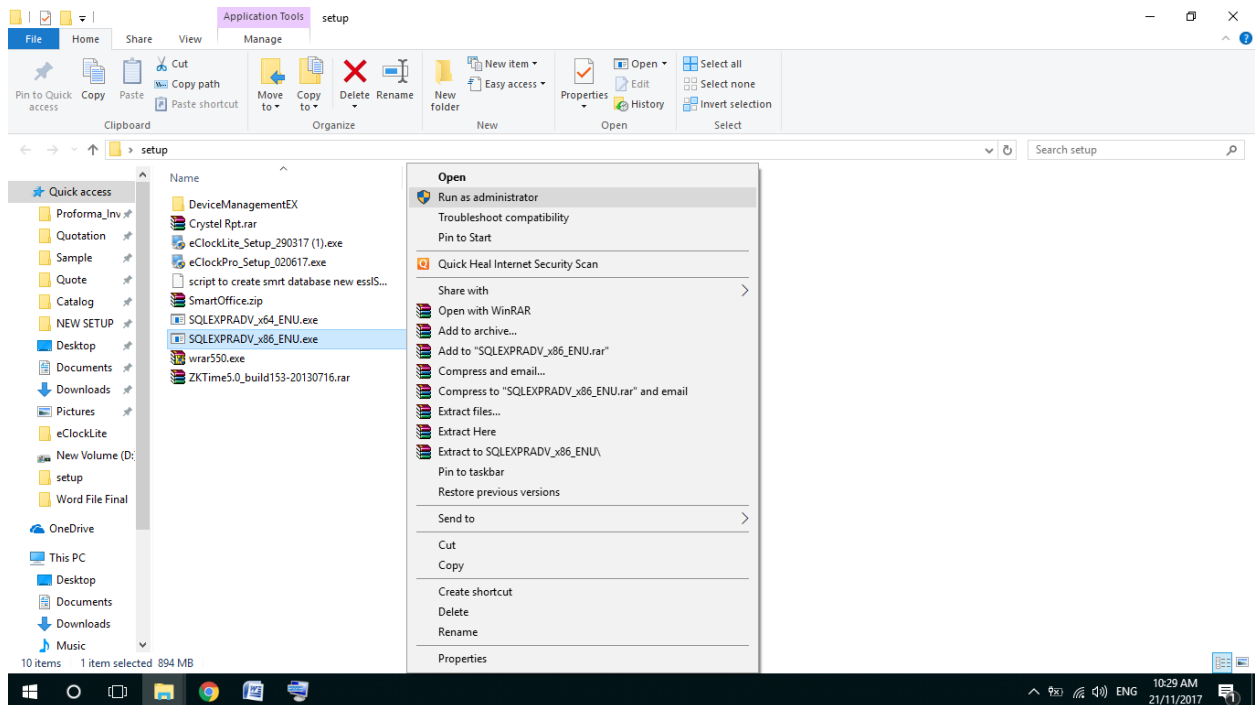
- For 32 bits.

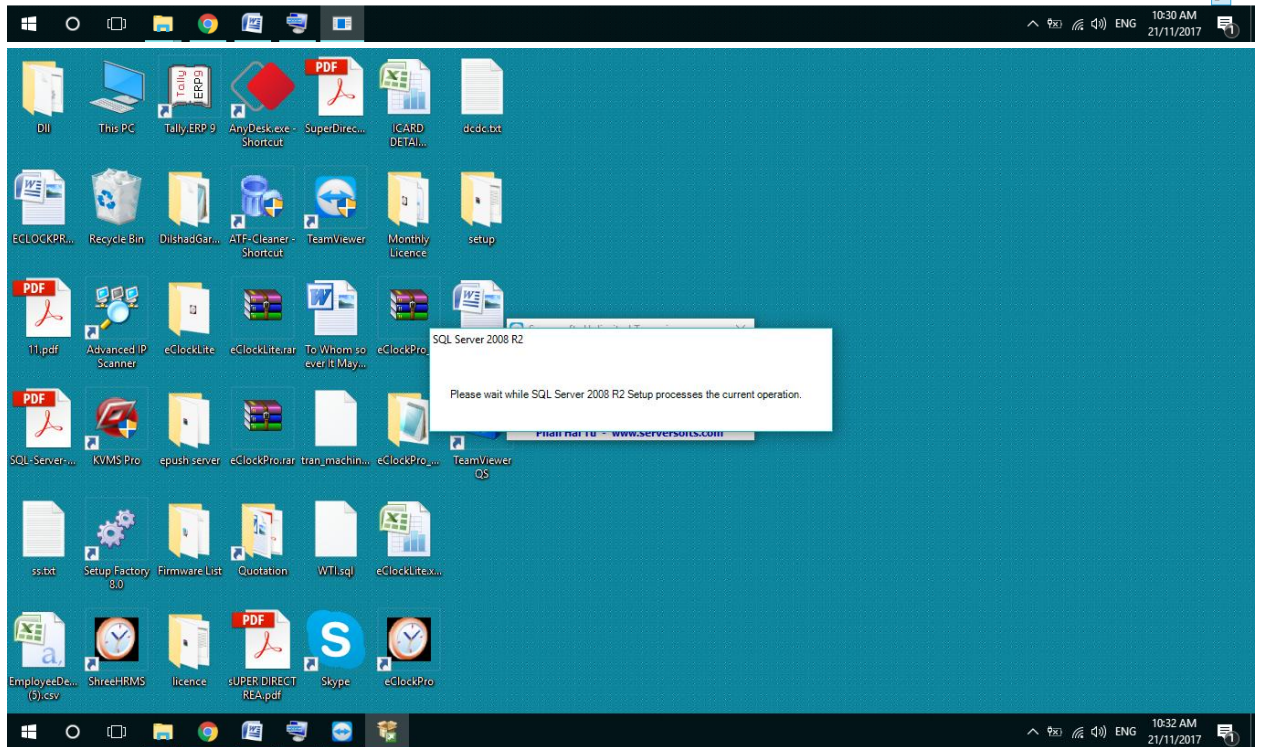
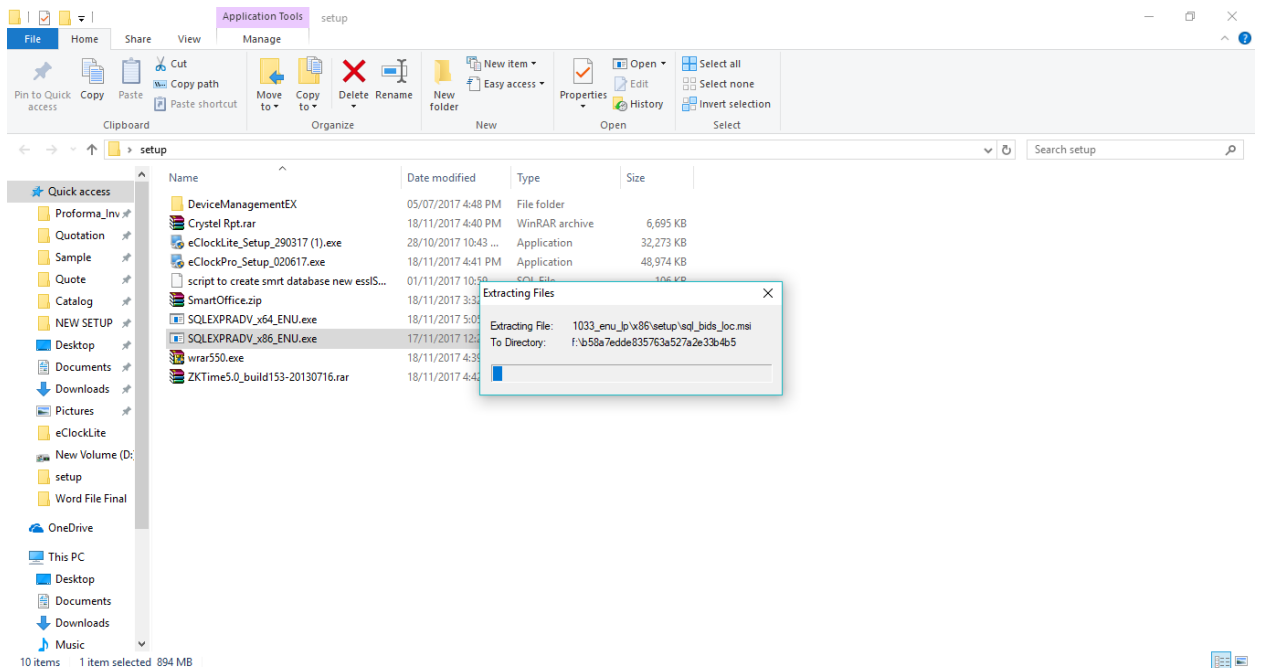


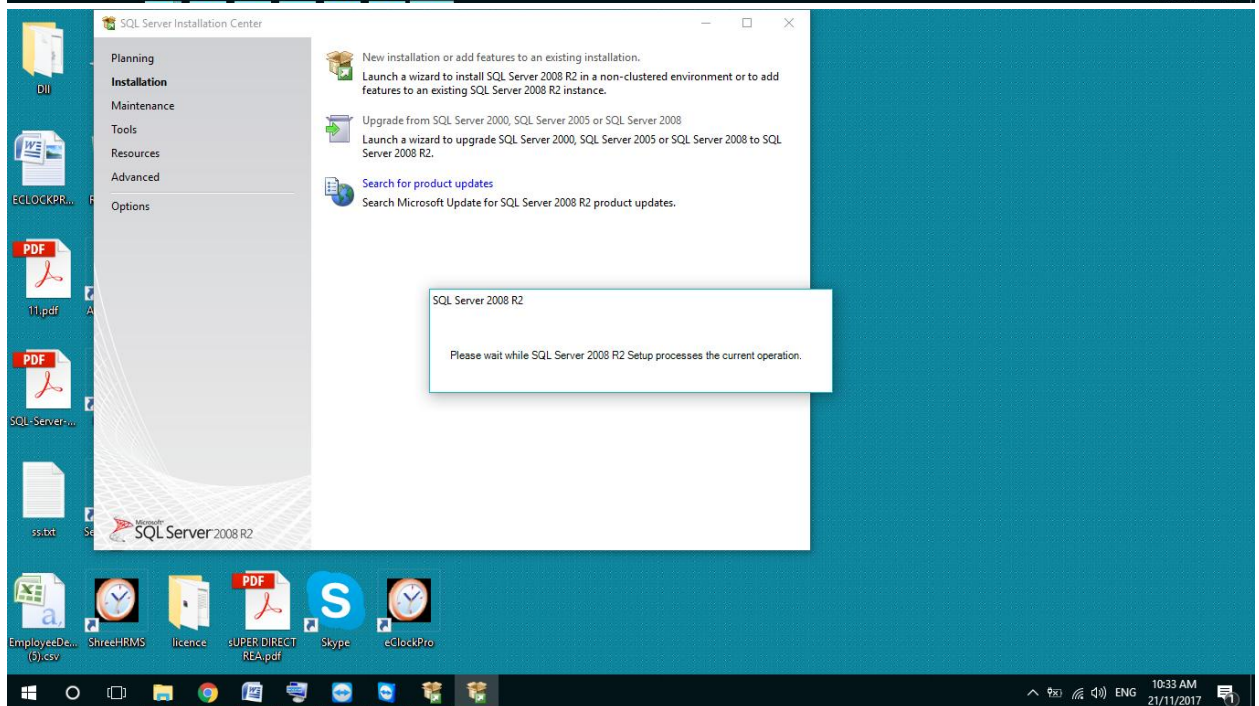
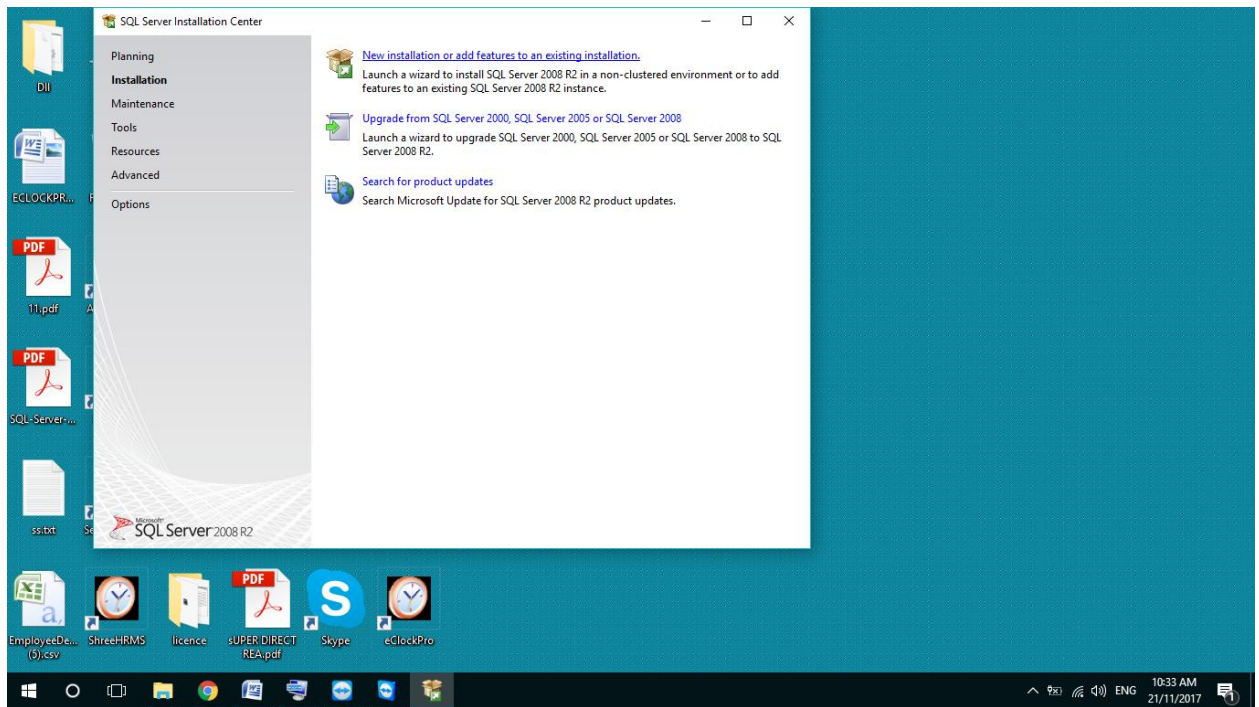
- For 64 bits.

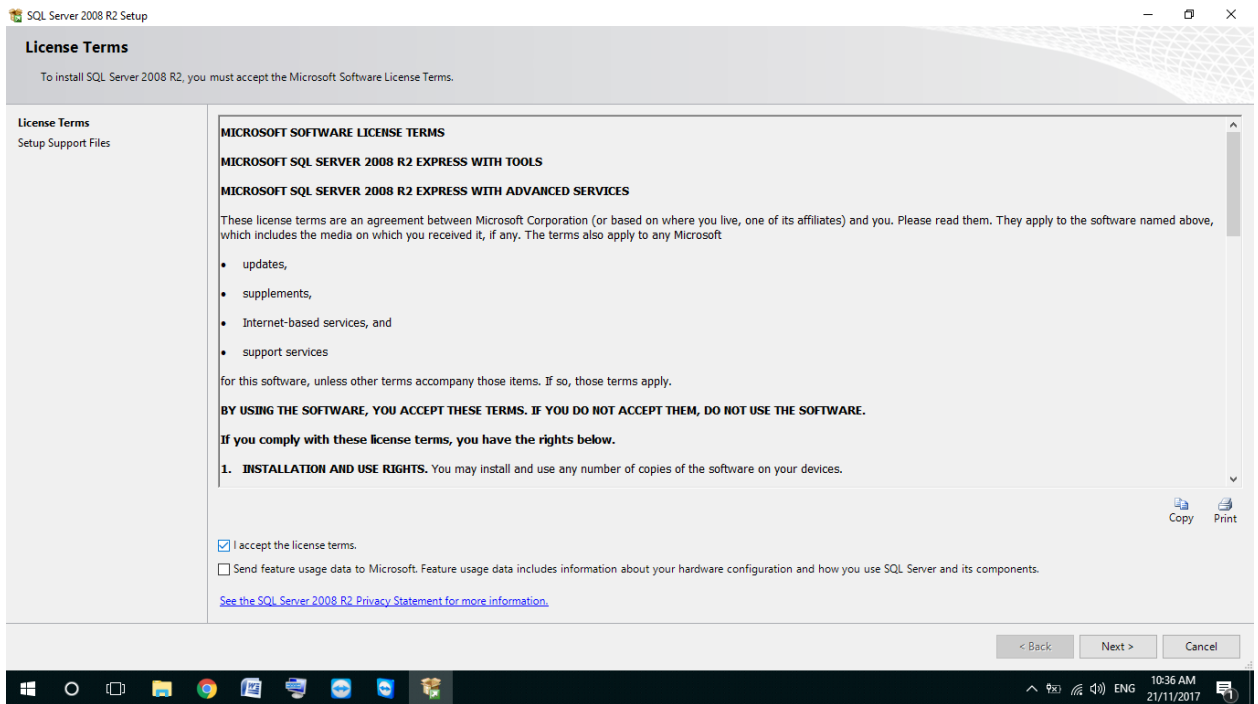
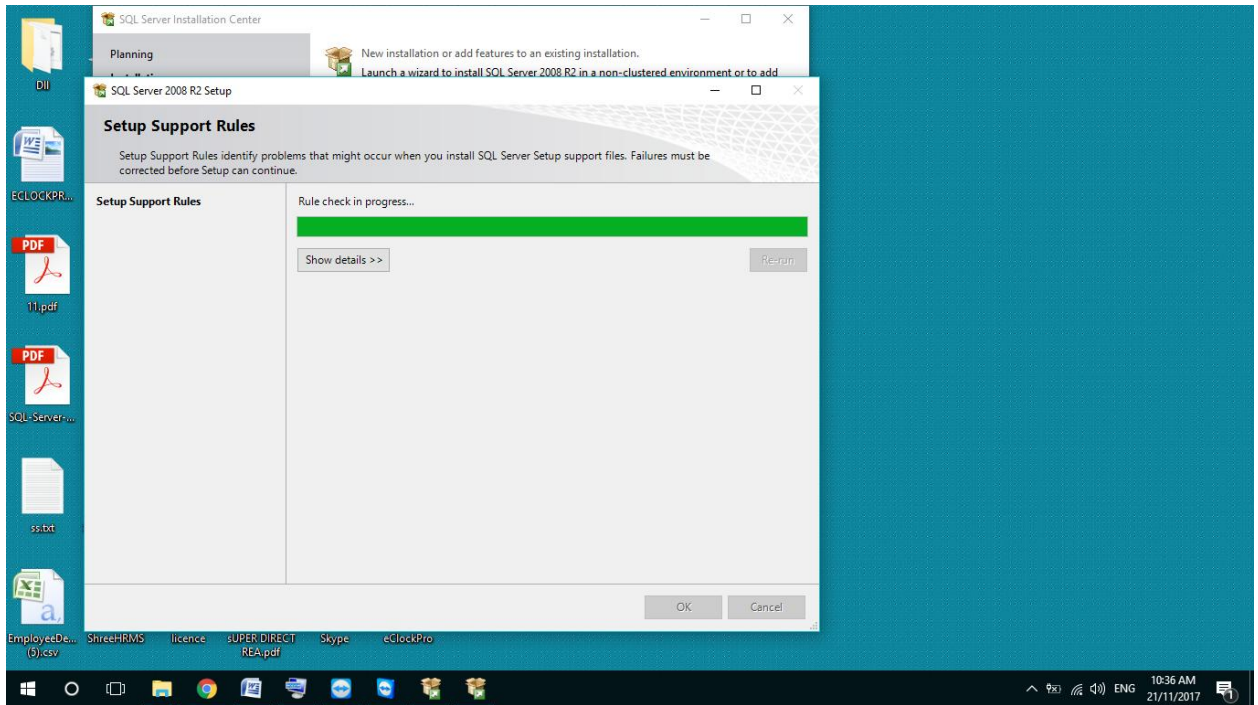


- Then click on next and download the sql.
- Now right click on set up of sql and run as administrator and f









SQL Server 2008 R2 Setup

License Terms

To install SQL Server 2008 R2, you must accept the Microsoft Software License Terms.

License Terms  
Setup Support Files

**BY USING THE SOFTWARE, YOU ACCEPT THESE TERMS. IF YOU DO NOT ACCEPT THEM, DO NOT USE THE SOFTWARE.**

**If you comply with these license terms, you have the rights below.**

- 1. INSTALLATION AND USE RIGHTS.** You may install and use any number of copies of the software on your devices.
- 2. SCOPE OF LICENSE.** The software is licensed, not sold. This agreement only gives you some rights to use the software. Microsoft reserves all other rights. Unless applicable law gives you more rights despite this limitation, you may use the software only as expressly permitted in this agreement. In doing so, you must comply with any technical limitations in the software that only allow you to use it in certain ways. You may not
  - disclose the results of any benchmark tests of the software to any third party without Microsoft's prior written approval;
  - work around any technical limitations in the software;
  - reverse engineer, decompile or disassemble the software, except and only to the extent that applicable law expressly permits, despite this limitation;
  - make more copies of the software than specified in this agreement or allowed by applicable law, despite this limitation; or
  - publish the software for others to copy.
- 3. BACKUP COPY.** You may make one backup copy of the software. You may use it only to reinstall the software.
- 4. DOCUMENTATION.** Any person that has valid access to your computer or internal network may copy and use the documentation for your internal, reference purposes.

☒ I accept the license terms.  
☐ Send feature usage data to Microsoft. Feature usage data includes information about your hardware configuration and how you use SQL Server and its components.  
[See the SQL Server 2008 R2 Privacy Statement for more information.](#)

CopyPrint

< Back

Next >

Cancel

SQL Server 2008 R2 Setup

Setup Support Files

Click Install to install Setup Support files. To install or update SQL Server 2008 R2, these files are required.

License Terms  
Setup Support Files

The following components are required for SQL Server Setup:

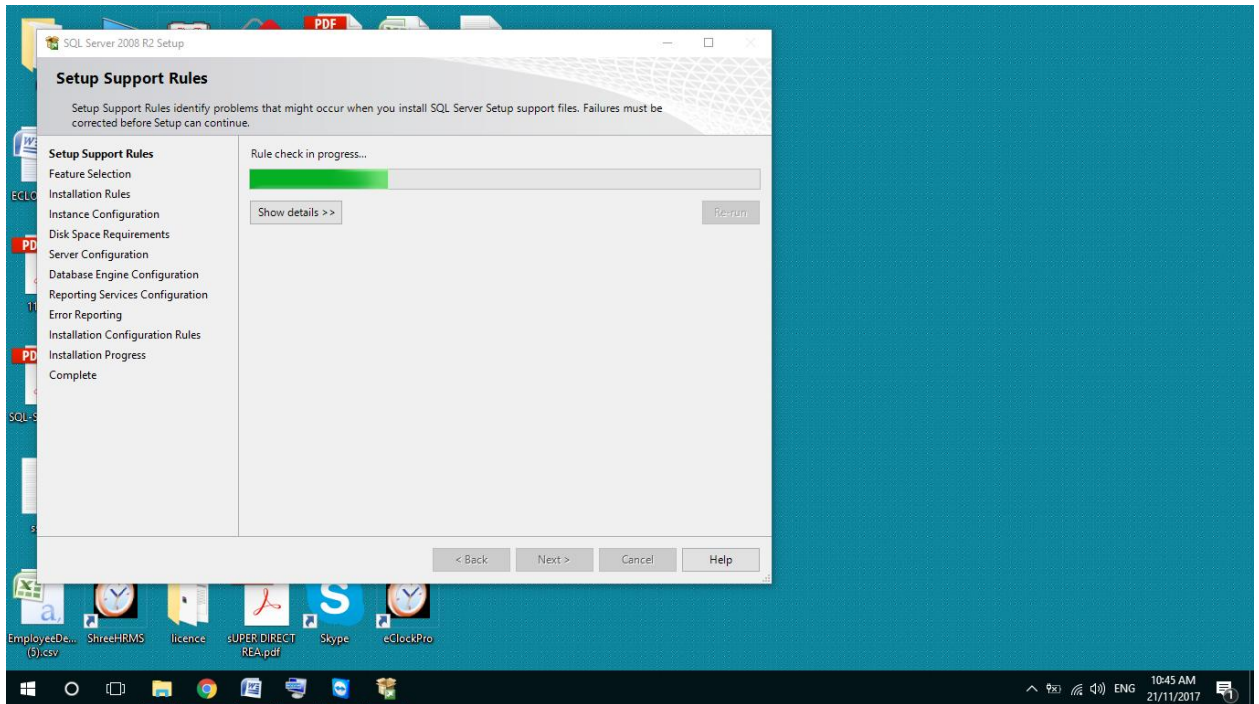
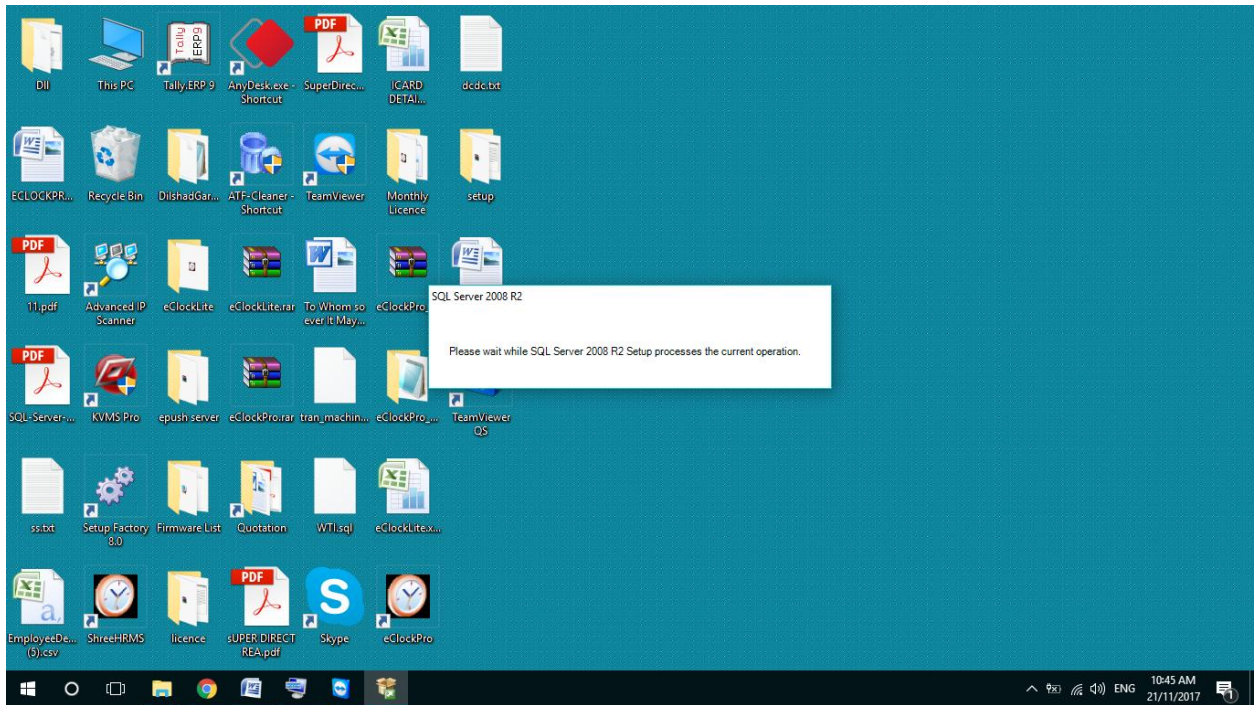
Feature Name	Status
Setup Support Files	

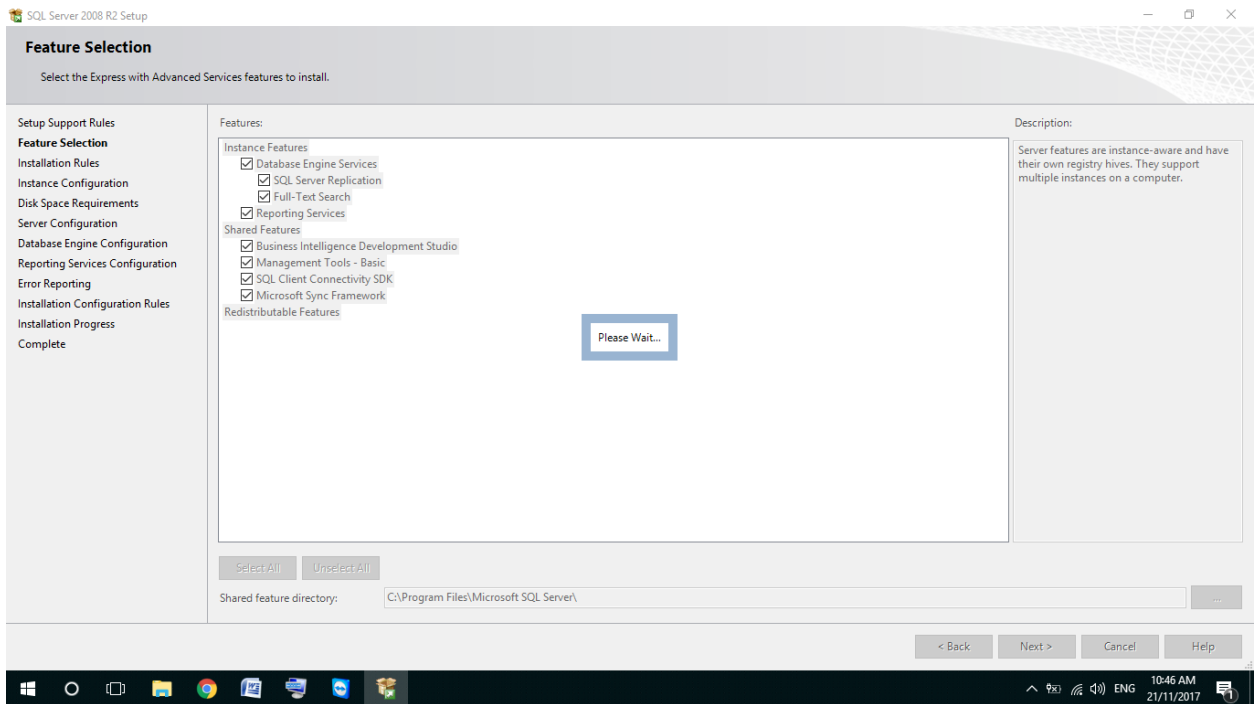
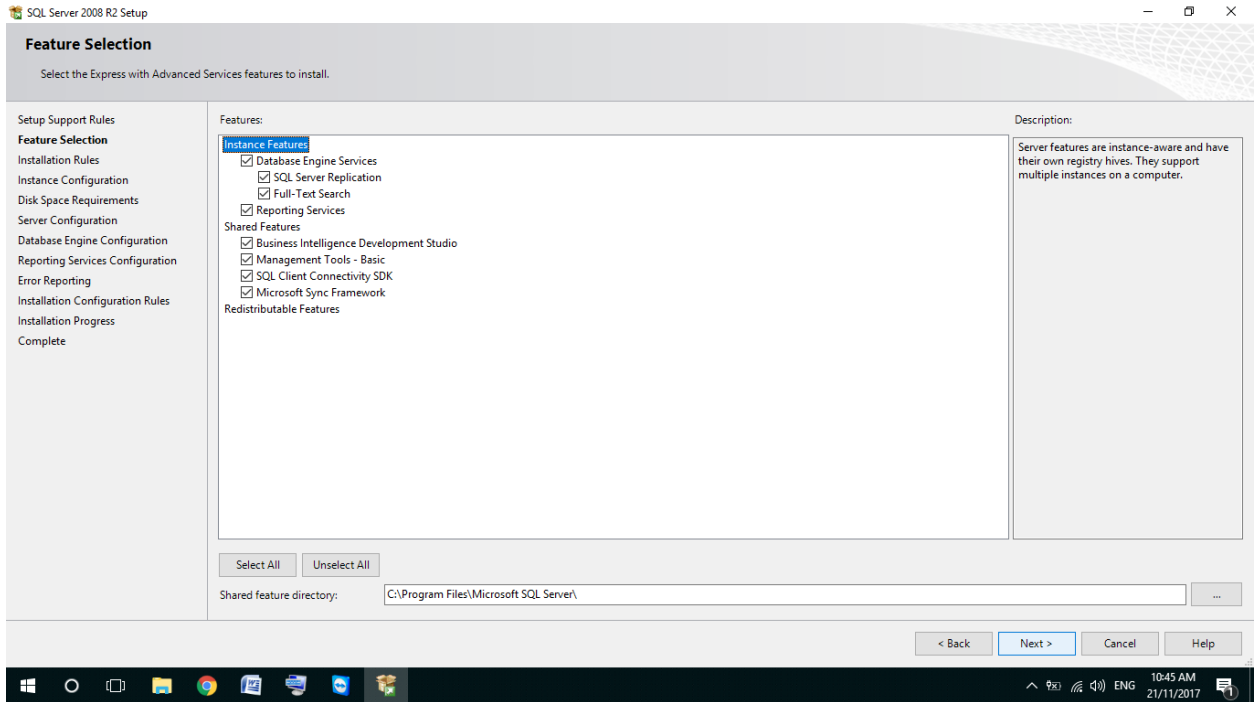
ExecuteCalculateScenarioWorkflow

< Back

Install

Cancel





SQL Server 2008 R2 Setup

### Instance Configuration

Specify the name and instance ID for the instance of SQL Server. Instance ID becomes part of the installation path.

Setup Support Rules

Feature Selection

Installation Rules

**Instance Configuration**

Disk Space Requirements

Server Configuration

Database Engine Configuration

Reporting Services Configuration

Error Reporting

Installation Configuration Rules

Installation Progress

Complete

☒ Default instance

☐ Named instance:

Instance ID:

Instance root directory:  ...

SQL Server directory: C:\Program Files\Microsoft SQL Server\MSSQL10\_50.MSSQLSERVER

Reporting Services directory: C:\Program Files\Microsoft SQL Server\MSRS10\_50.MSSQLSERVER

Installed instances:

Instance Name	Instance ID	Features	Edition	Version
---------------	-------------	----------	---------	---------

< Back   Next >   Cancel   Help

SQL Server 2008 R2 Setup

### Instance Configuration

Specify the name and instance ID for the instance of SQL Server. Instance ID becomes part of the installation path.

Setup Support Rules

Feature Selection

Installation Rules

**Instance Configuration**

Disk Space Requirements

Server Configuration

Database Engine Configuration

Reporting Services Configuration

Error Reporting

Installation Configuration Rules

Installation Progress

Complete

☒ Default instance

☐ Named instance:

Instance ID:

Instance root directory:  ...

SQL Server directory: C:\Program Files\Microsoft SQL Server\MSSQL10\_50.MSSQLSERVER

Reporting Services directory: C:\Program Files\Microsoft SQL Server\MSRS10\_50.MSSQLSERVER

Installed instances:

Instance Name	Instance ID	Features	Edition	Version
---------------	-------------	----------	---------	---------

< Back   Next >   Cancel   Help

SQL Server 2008 R2 Setup

Instance Configuration

Specify the name and instance ID for the instance of SQL Server. Instance ID becomes part of the installation path.

Setup Support Rules

Feature Selection

Installation Rules

Instance Configuration

Disk Space Requirements

Server Configuration

Database Engine Configuration

Reporting Services Configuration

Error Reporting

Installation Configuration Rules

Installation Progress

Complete

☒ Default instance

☐ Named instance:

Instance ID:

Instance root directory:

SQL Server directory:

Reporting Services directory:

Installed instances:

Please Wait...

Instance Name	Instance ID	Features	Edition	Version
---------------	-------------	----------	---------	---------

< Back

Next >

Cancel

Help

SQL Server 2008 R2 Setup

Server Configuration

Specify the service accounts and collation configuration.

Setup Support Rules

Feature Selection

Installation Rules

Instance Configuration

Disk Space Requirements

Server Configuration

Database Engine Configuration

Reporting Services Configuration

Error Reporting

Installation Configuration Rules

Installation Progress

Complete

Service Accounts

Collation

Microsoft recommends that you use a separate account for each SQL Server service.

Service	Account Name	Password	Startup Type
SQL Server Database Engine	NT AUTHORITY\NETWORK SERVICE		Automatic
SQL Server Reporting Services	NT AUTHORITY\NETWORK SERVICE		Automatic
SQL Full-text Filter Daemon Launcher	NT AUTHORITY\LOCAL SERVICE		Manual
SQL Server Browser	NT AUTHORITY\LOCAL SERVICE		Disabled

Automatic

Disabled

Manual

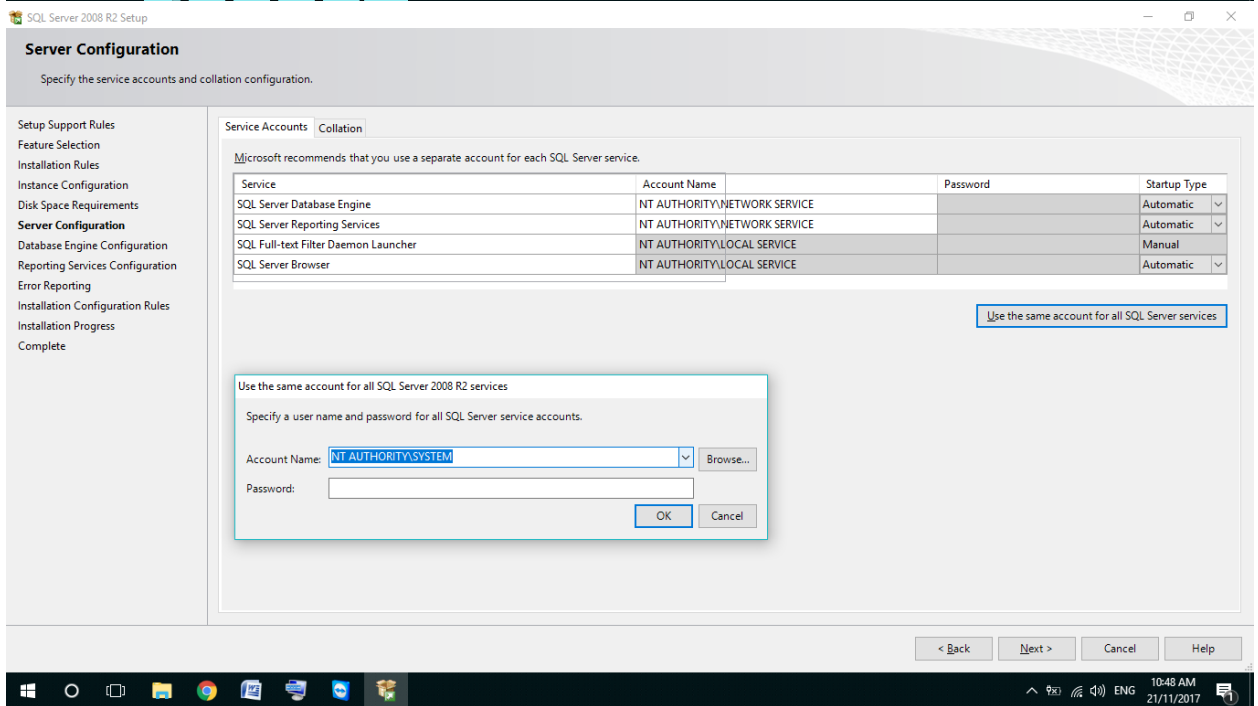
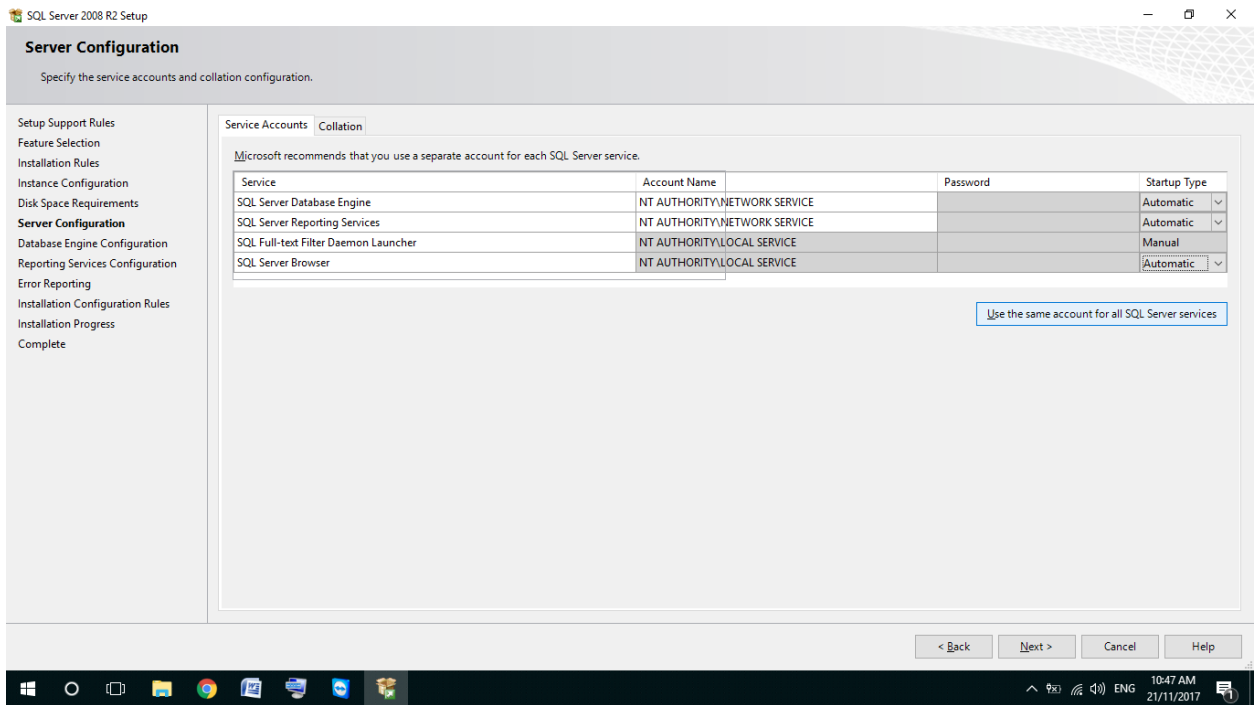
Use the same account for all SQL Server services

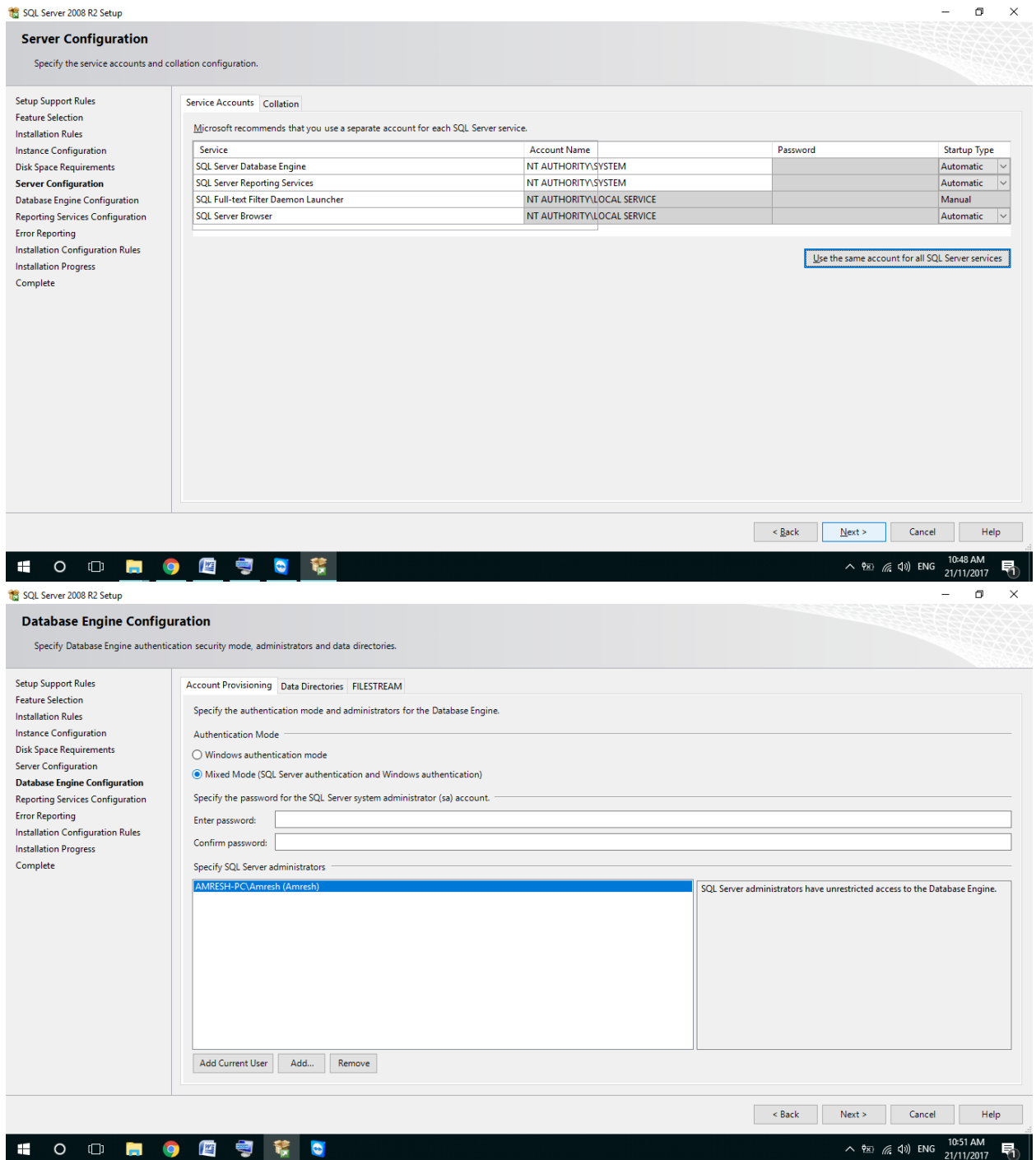
< Back

Next >

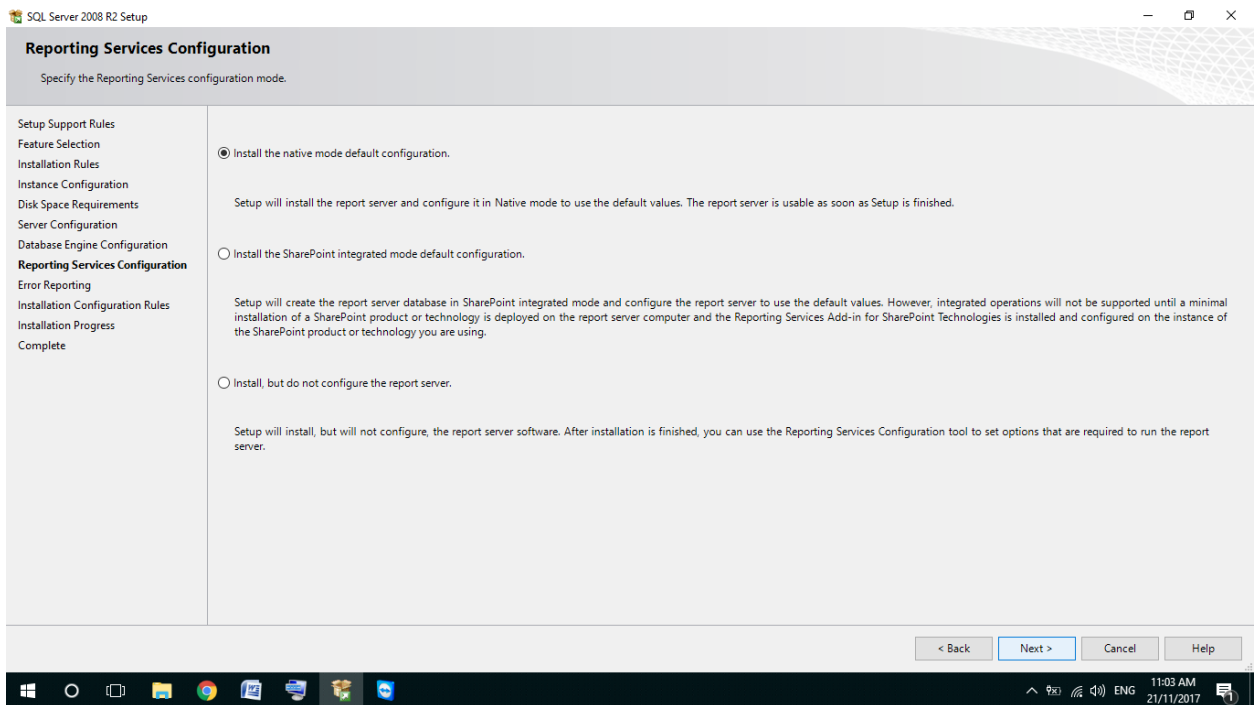
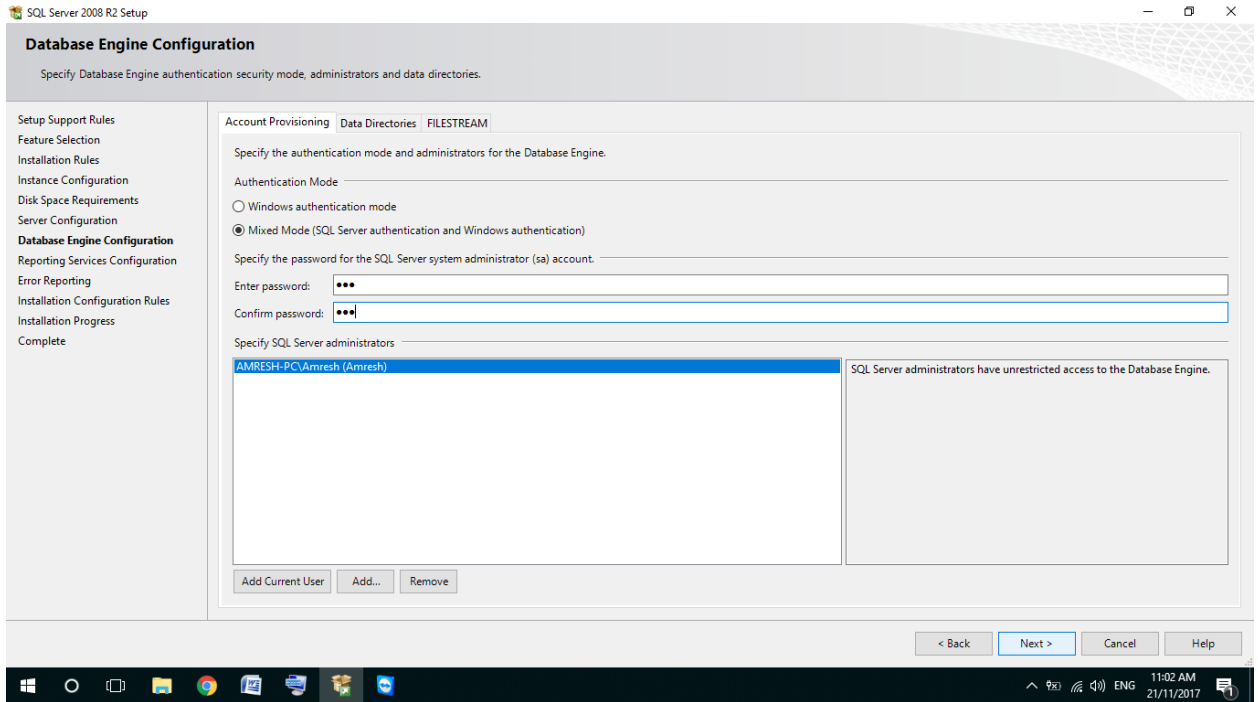
Cancel

Help





The login id should be sa and password should be sss or sss@123.



SQL Server 2008 R2 Setup

### Error Reporting

Help Microsoft improve SQL Server features and services.

- Setup Support Rules
- License Terms
- Feature Selection
- Installation Rules
- Instance Configuration
- Disk Space Requirements
- Server Configuration
- Database Engine Configuration
- Reporting Services Configuration
- Error Reporting**
- Installation Configuration Rules
- Installation Progress
- Complete

Specify the information that you would like to automatically send to Microsoft to improve future releases of SQL Server. These settings are optional. Microsoft treats this information as confidential. Microsoft may provide updates through Microsoft Update to modify feature usage data. These updates might be downloaded and installed on your machine automatically, depending on your Automatic Update settings.

[See the SQL Server 2008 R2 Privacy Statement for more information.](#)

[Read more about Microsoft Update and Automatic Update.](#)

☐ Send Windows and SQL Server Error Reports to Microsoft or your corporate report server. This setting only applies to services that run without user interaction.

< Back

Next >

Cancel

Help

Windows taskbar: 1:44 PM 21/11/2017

SQL Server 2008 R2 Setup

### Installation Progress

- Setup Support Rules
- License Terms
- Feature Selection
- Installation Rules
- Instance Configuration
- Disk Space Requirements
- Server Configuration
- Database Engine Configuration
- Reporting Services Configuration
- Error Reporting
- Installation Configuration Rules
- Installation Progress**
- Complete

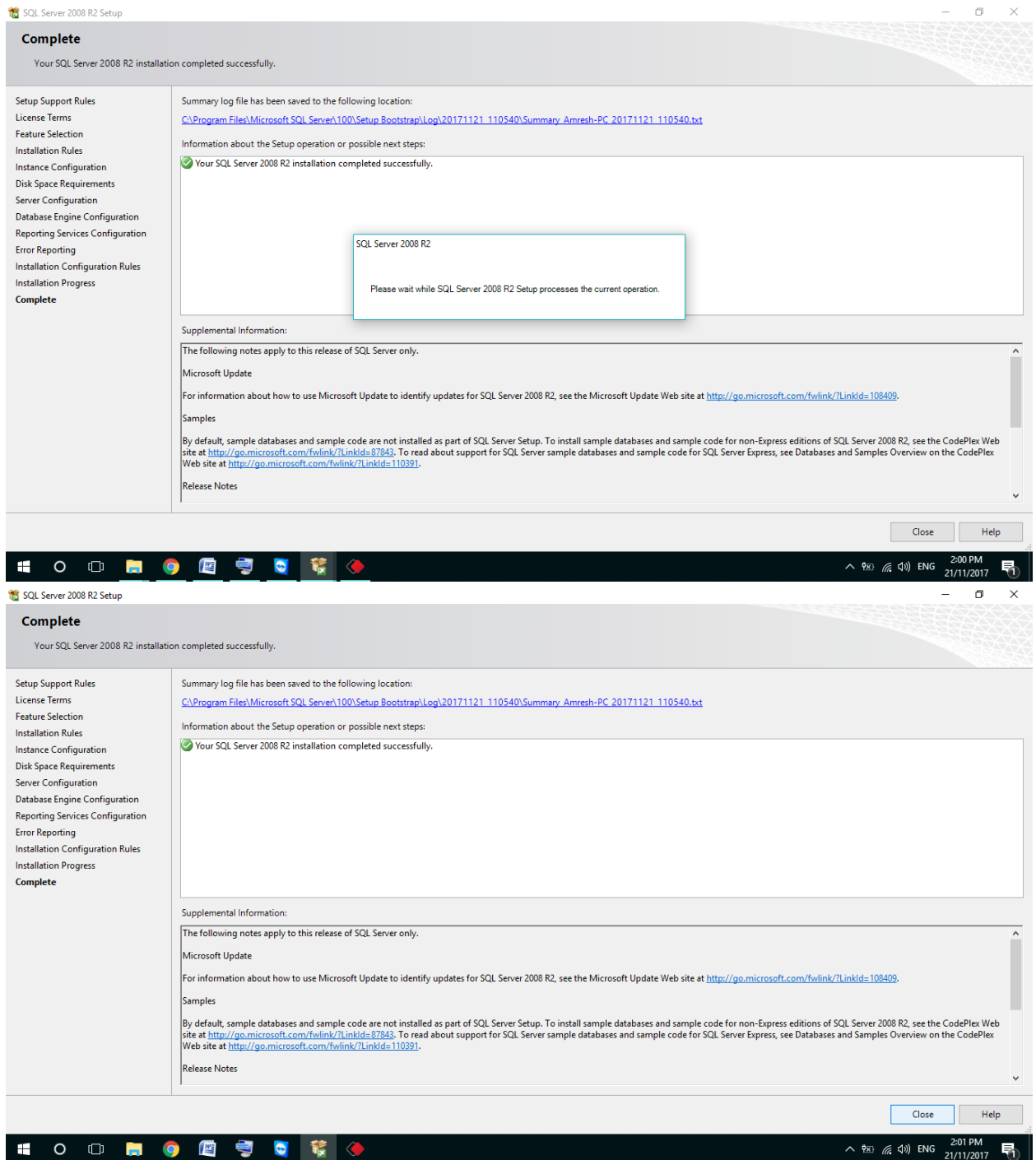
Creating servicing cache folder.

Next >

Cancel

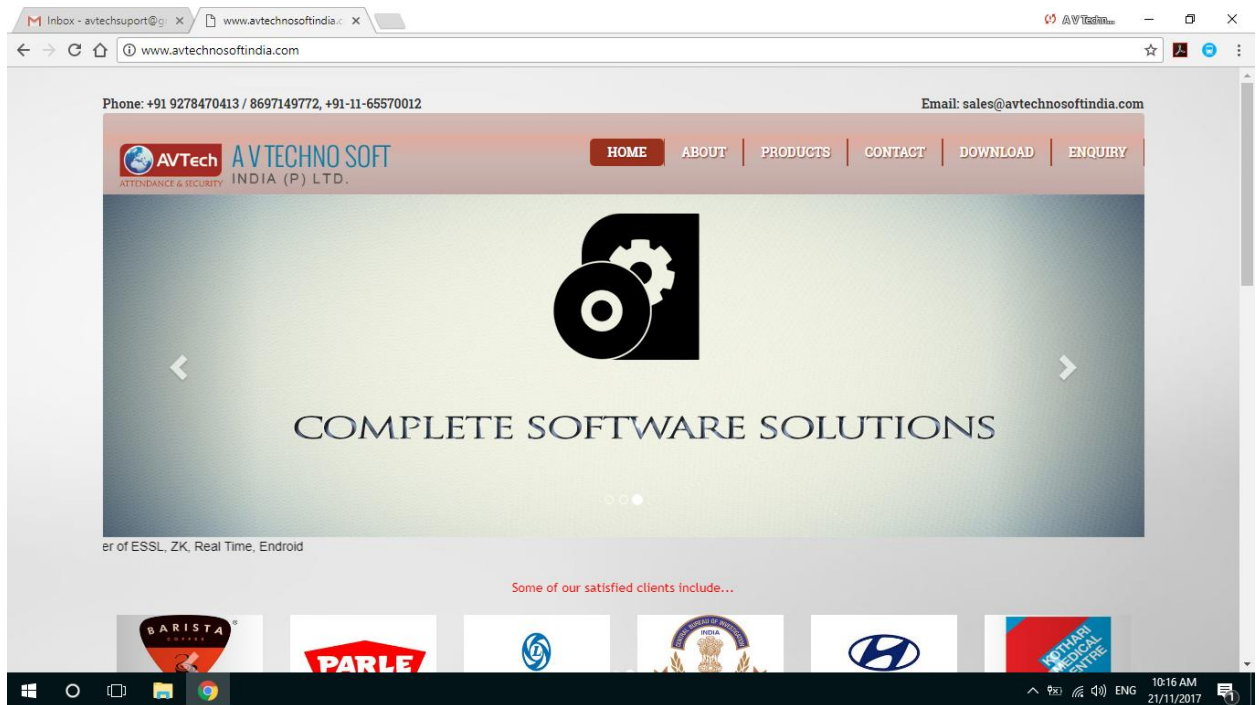
Help

Windows taskbar: 1:44 PM 21/11/2017

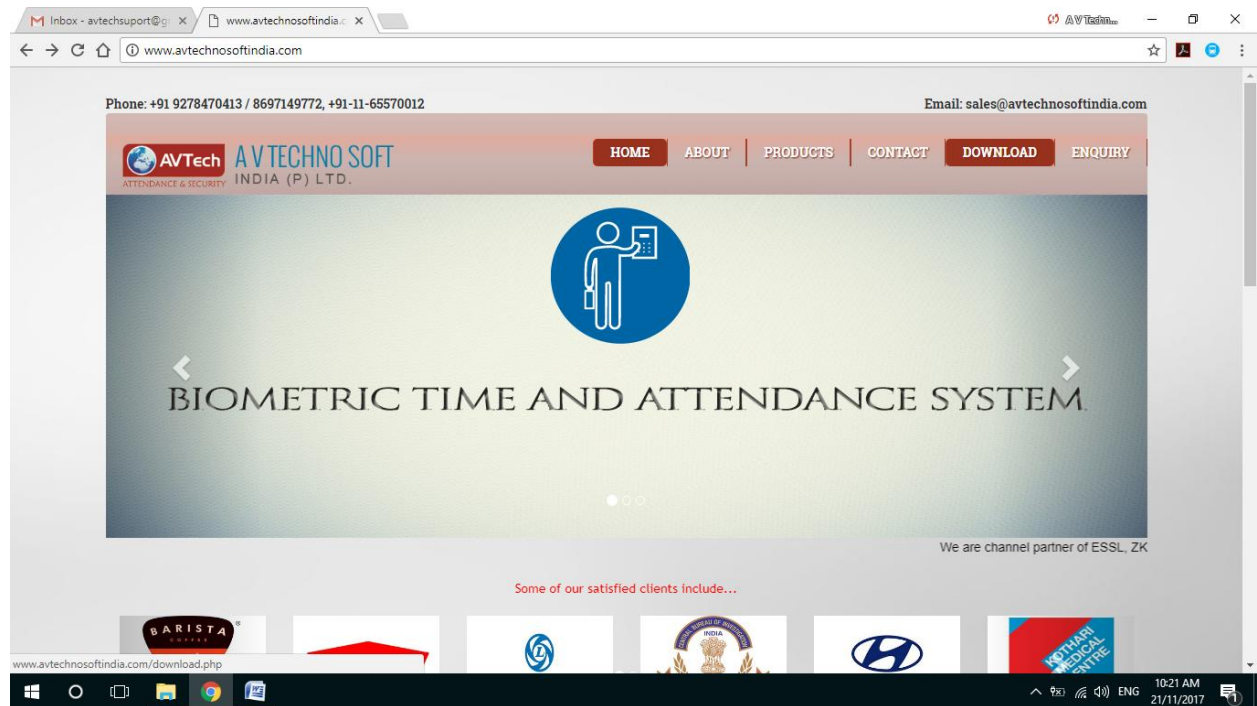


Step2:- Download and install Eclockpro ...

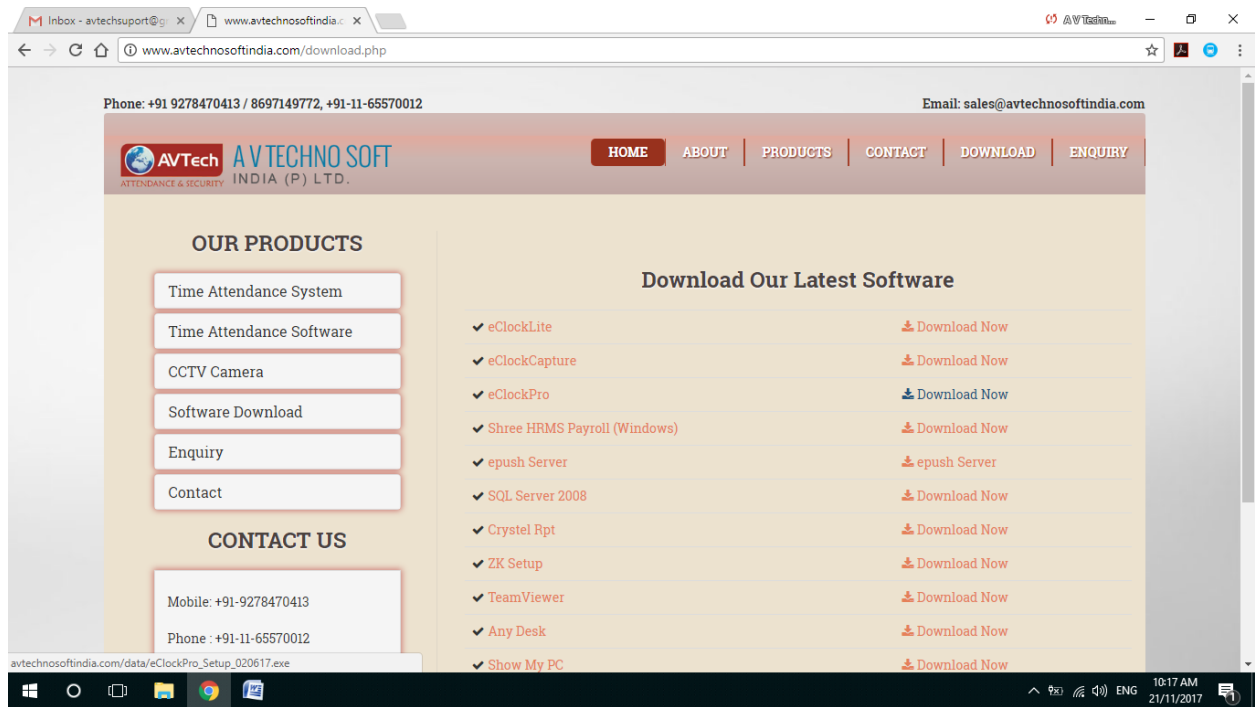
- Click on this website: <http://www.avtechnosoftindia.com>



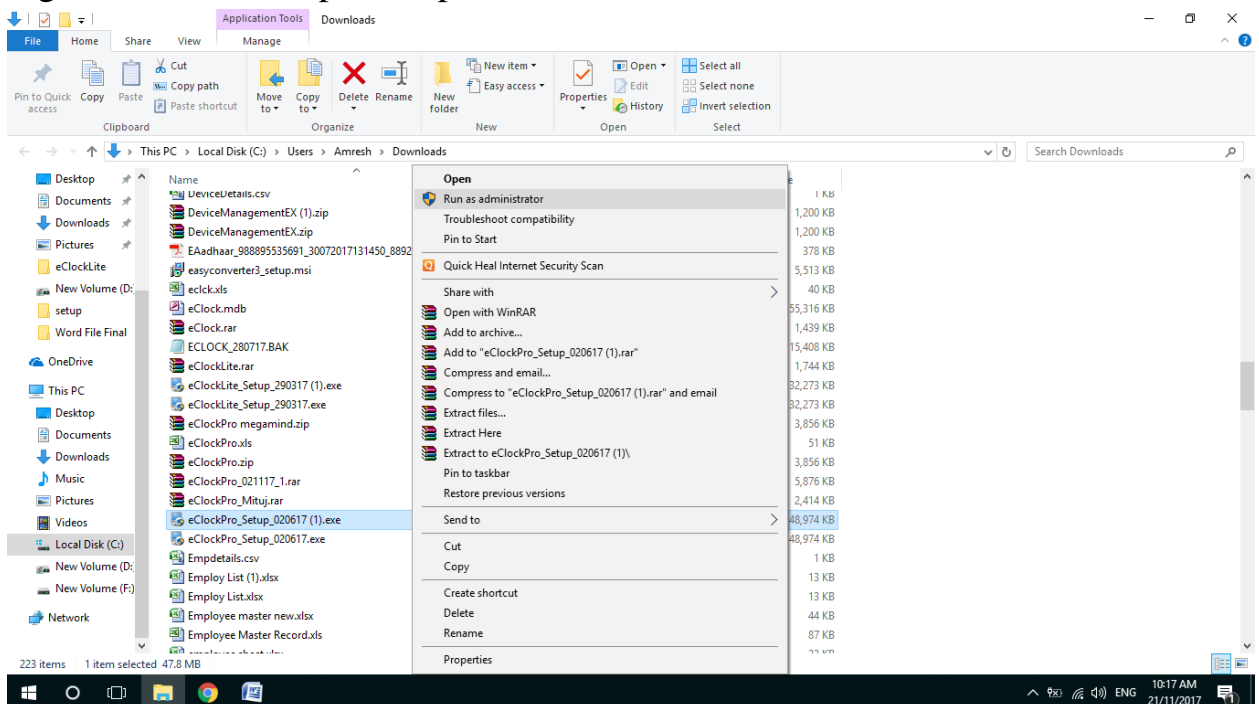
- Then Download



- Eclockpro and Click Download now

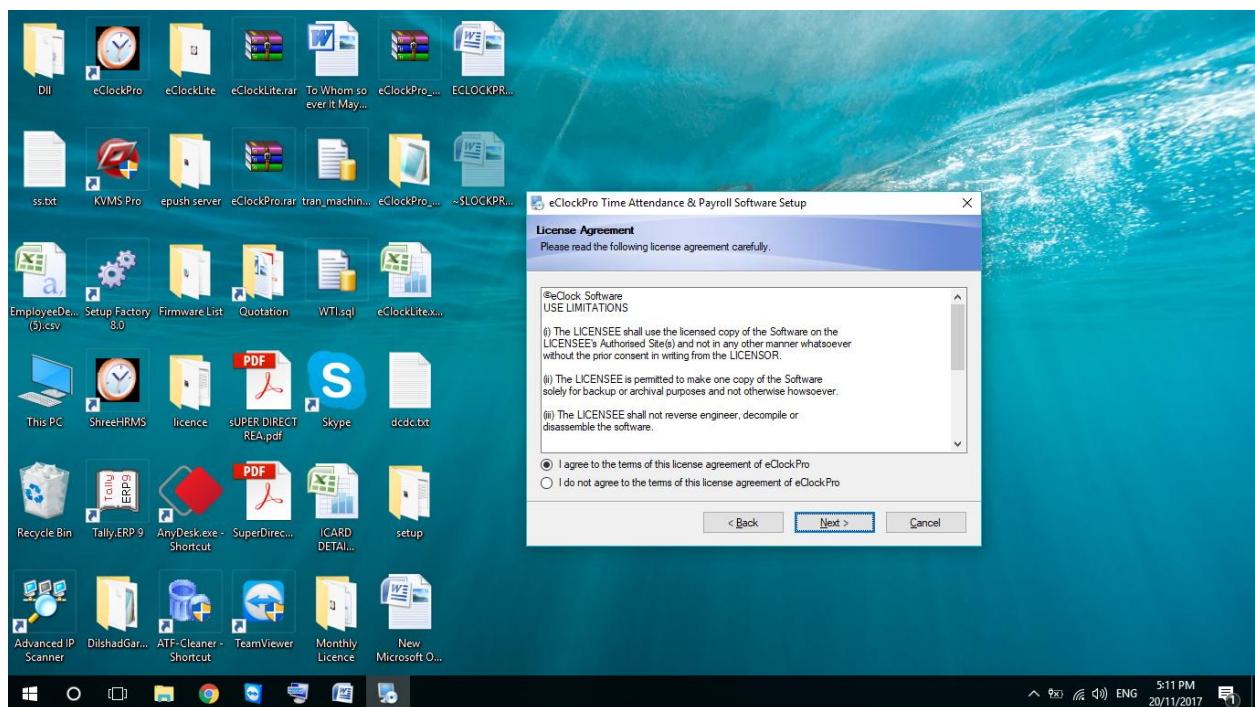
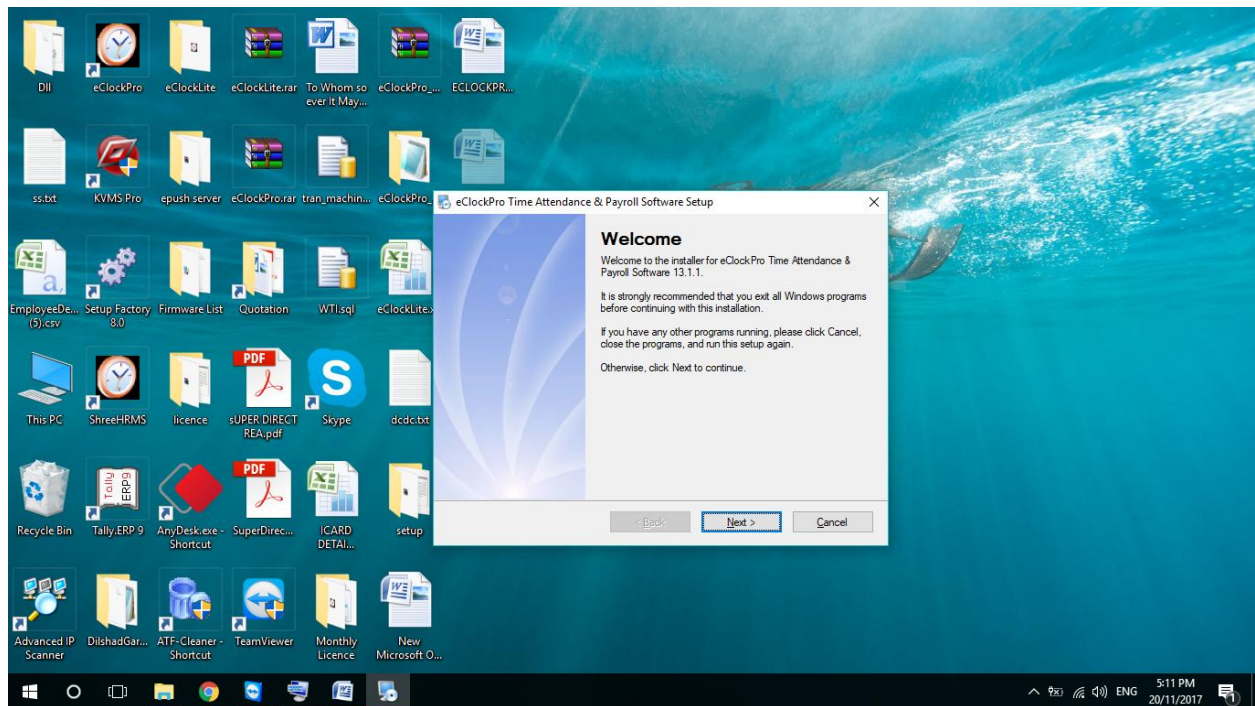


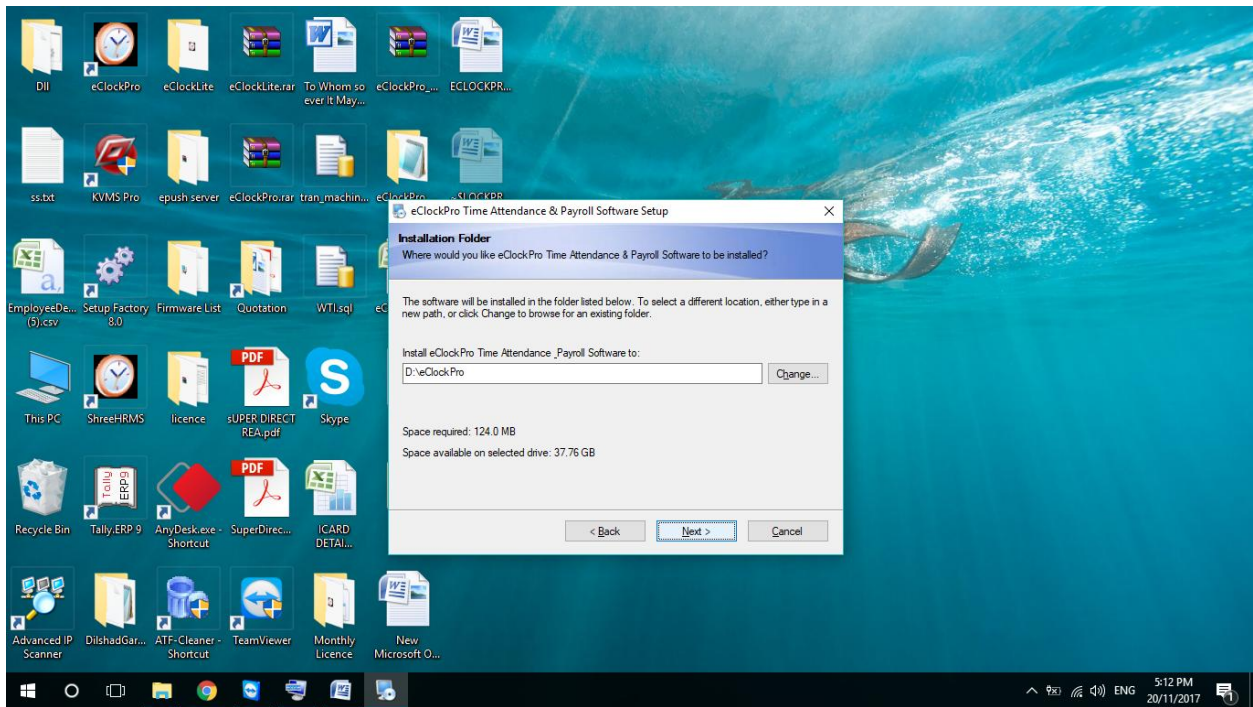
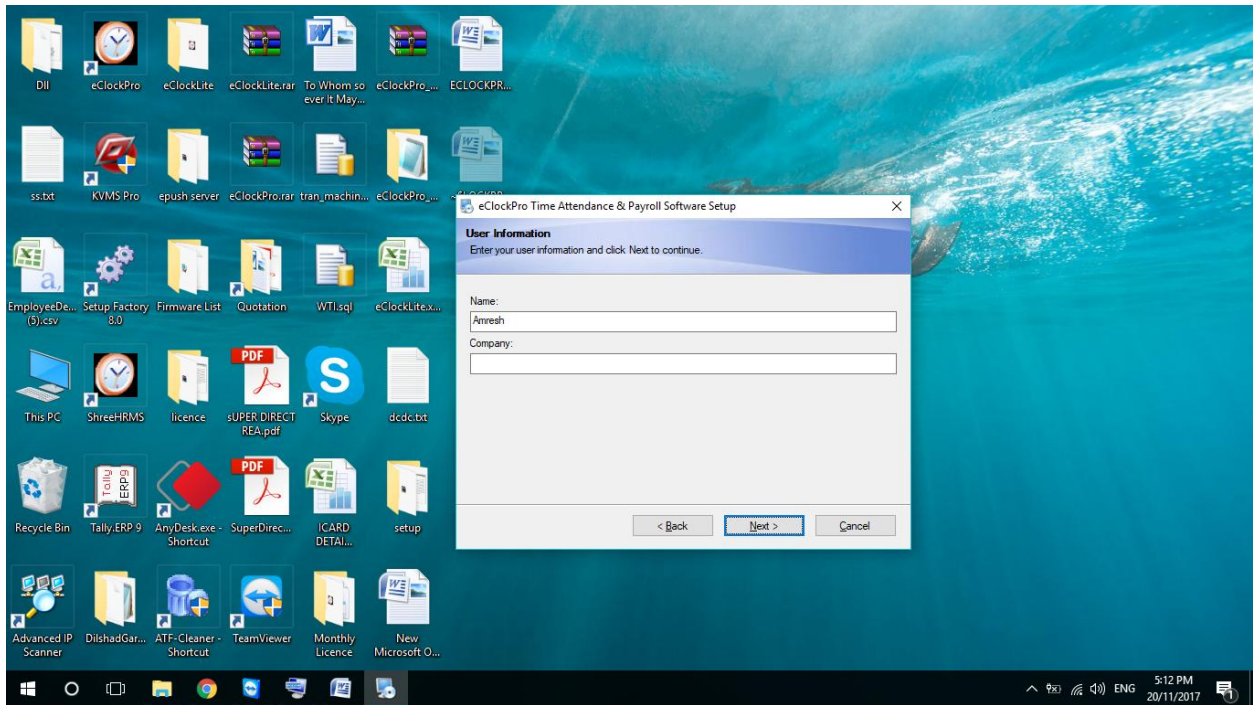
- Right click an eclockpro setup and run as administrator

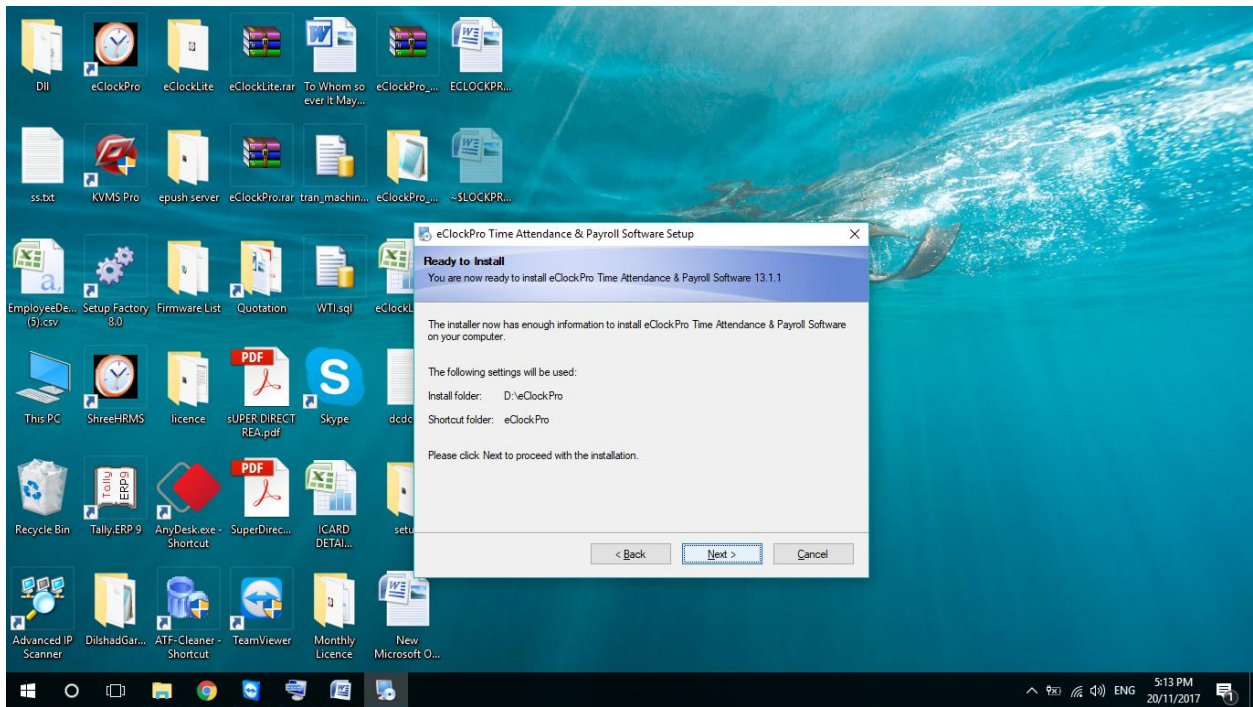
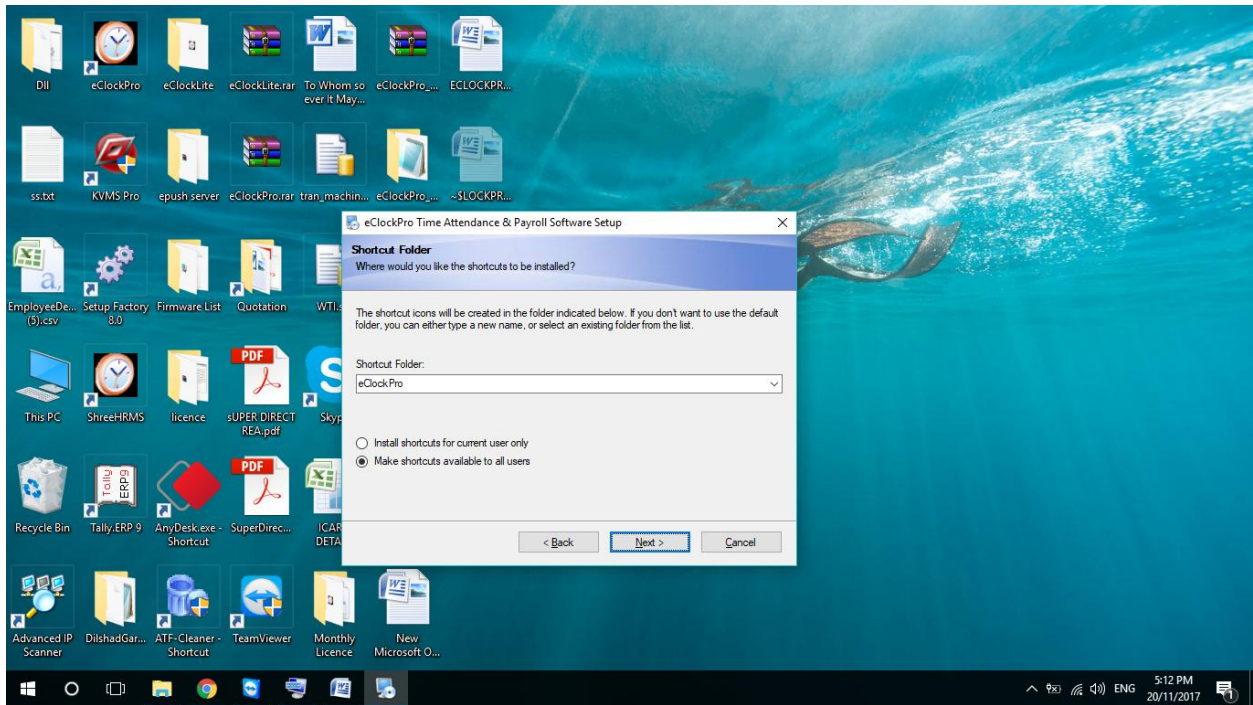


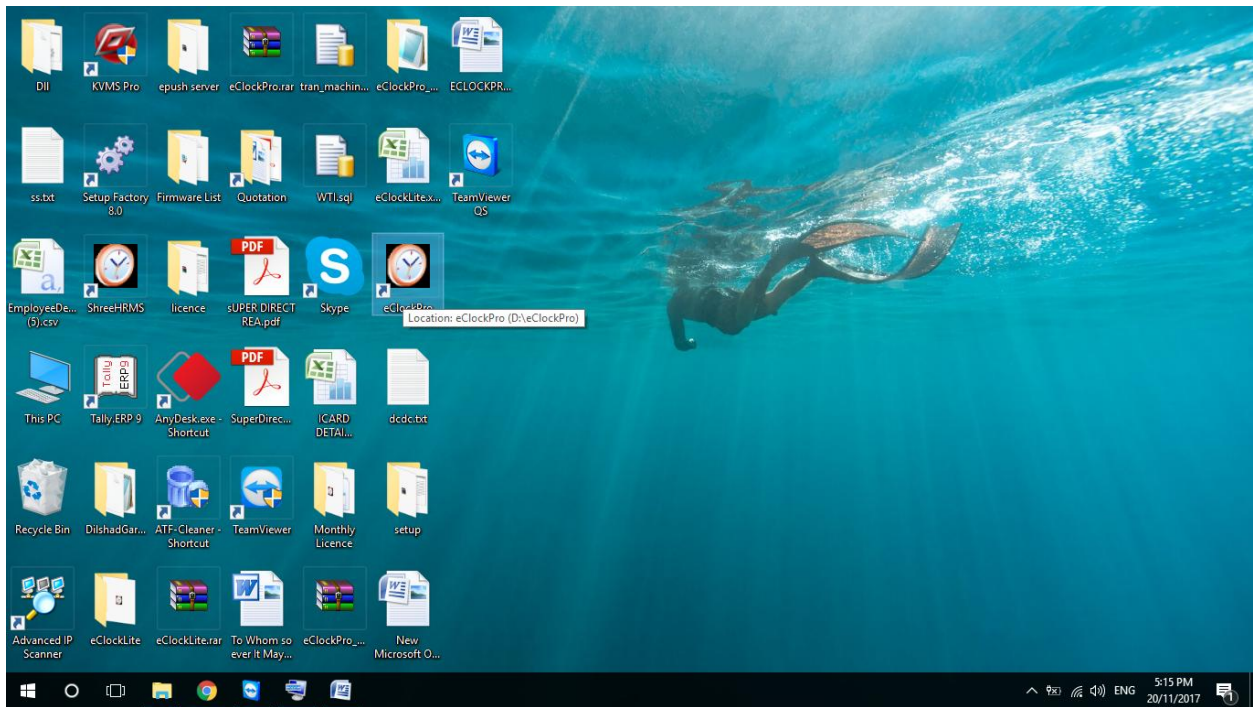
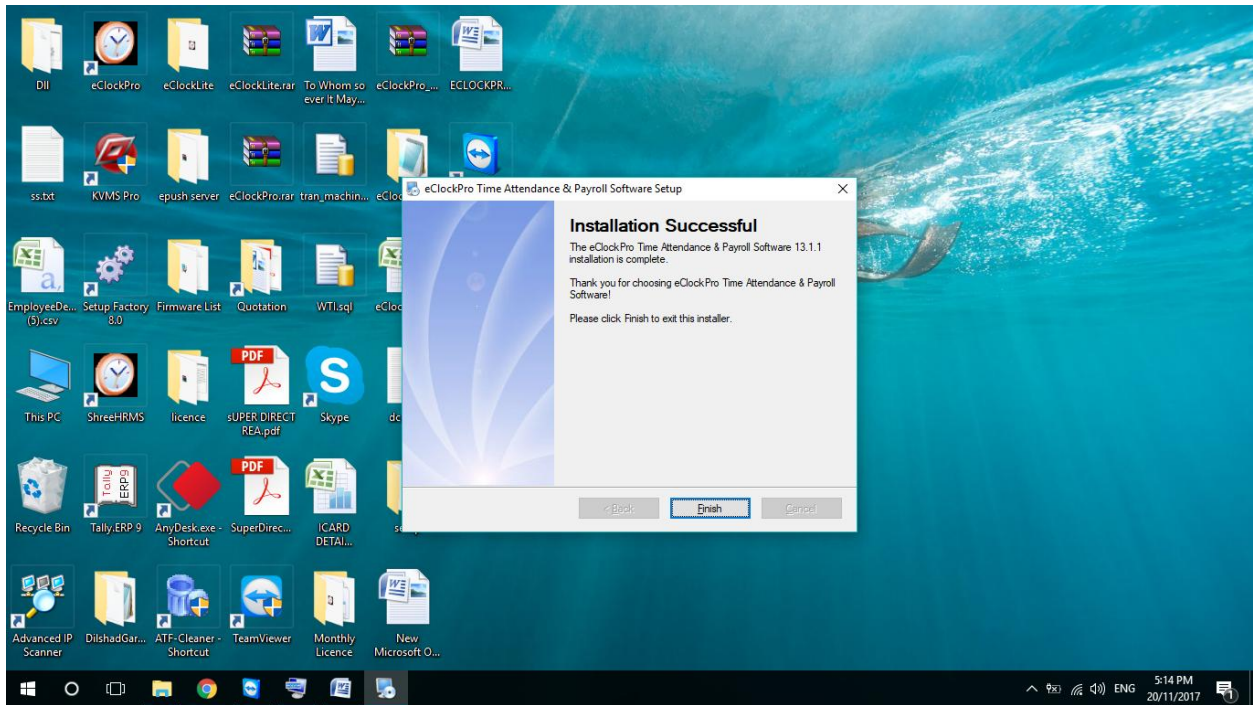
- Now follow the steps by images given below:-

SS

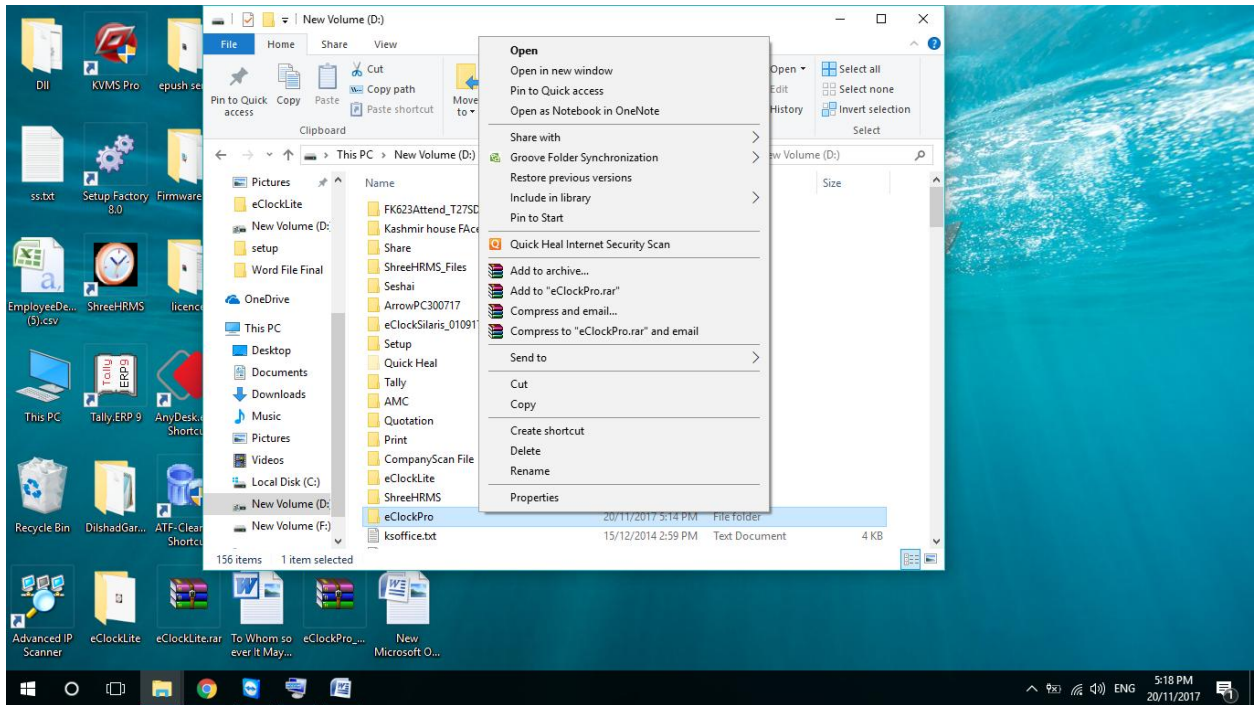




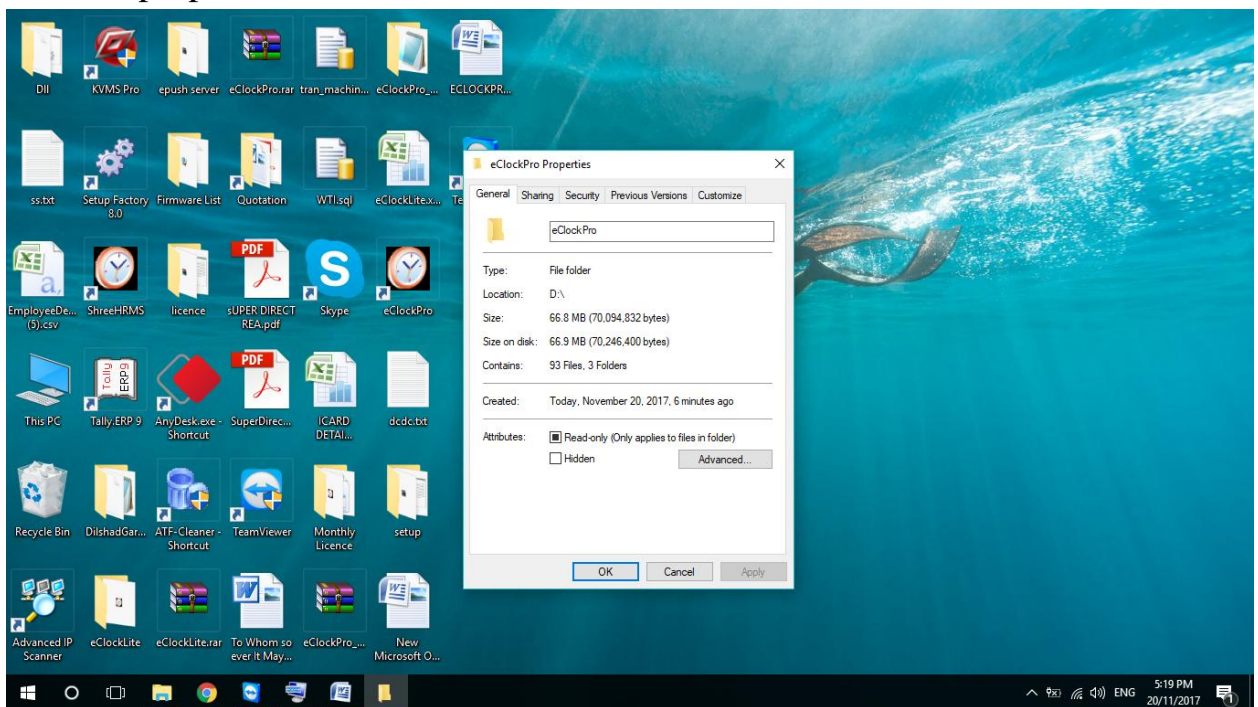




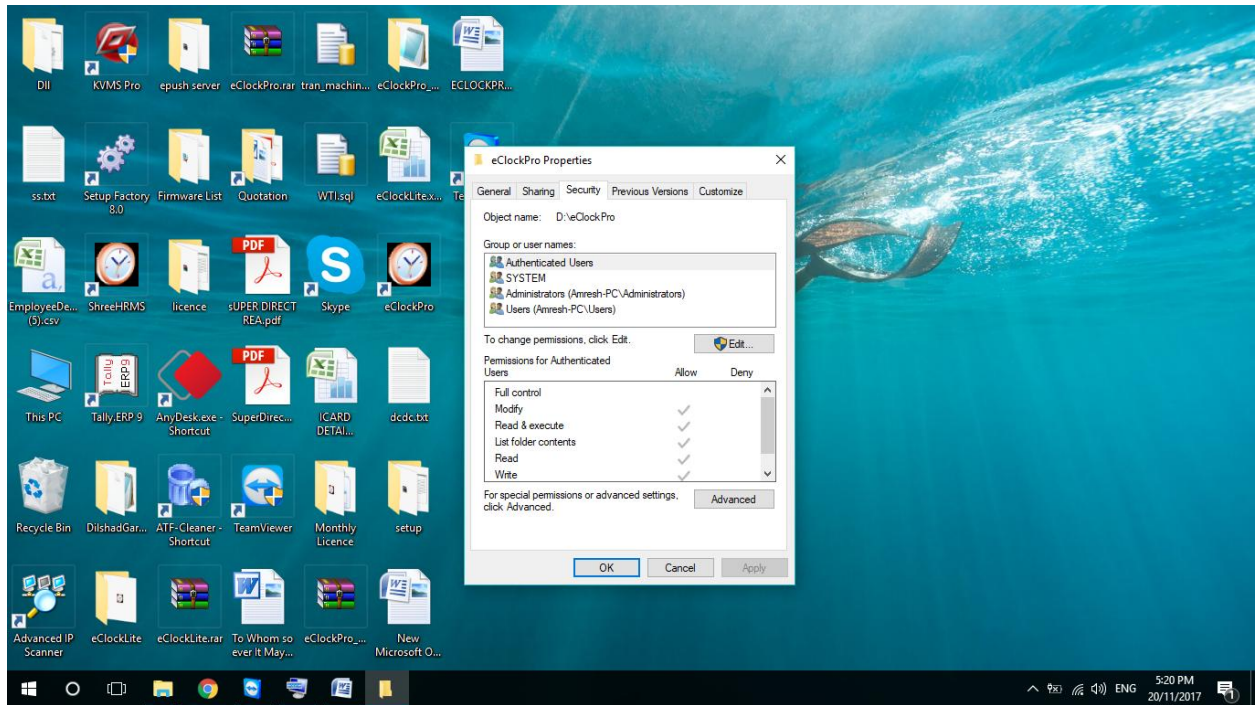
- Give the full permissions of eclockpro folder in D Drive.



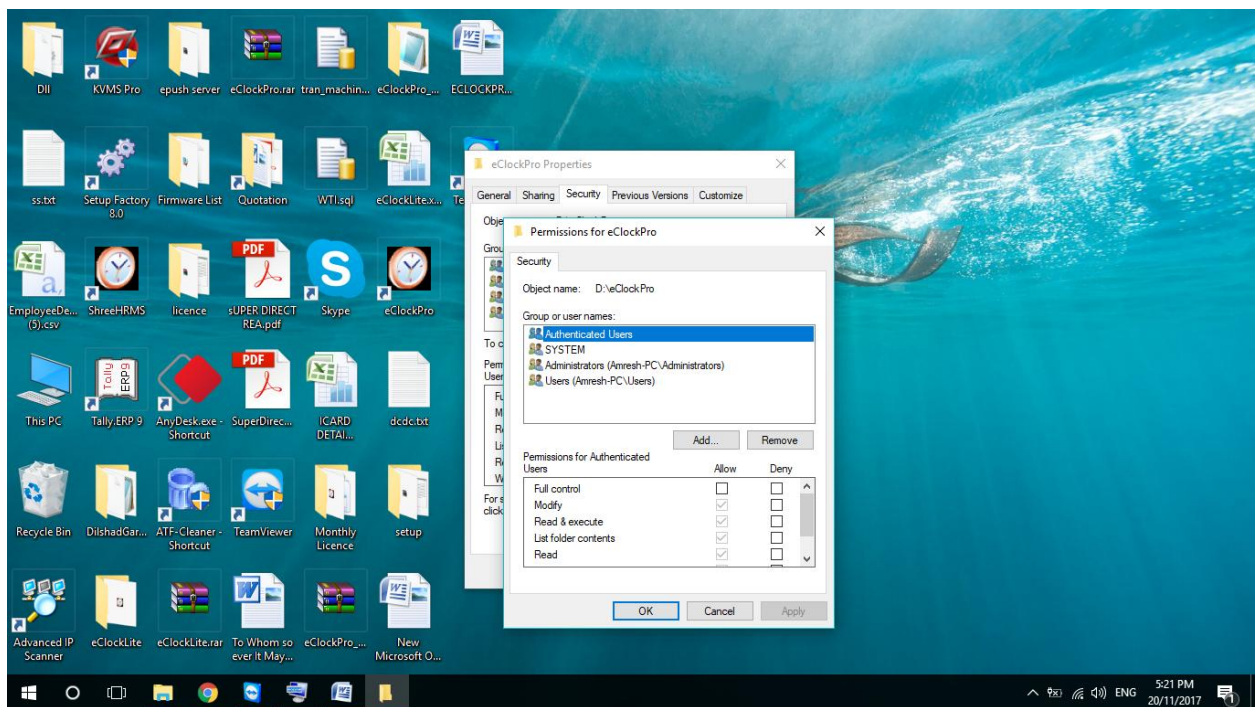
- Click on properties.



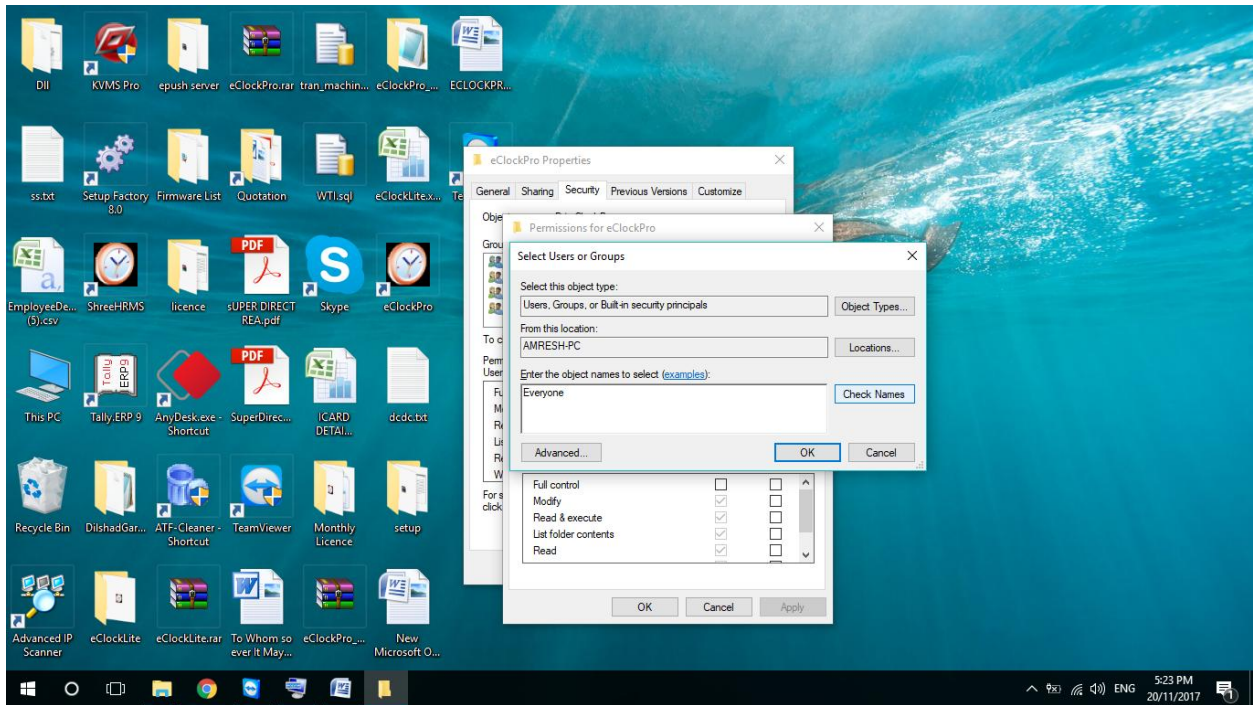
- Click on Security.



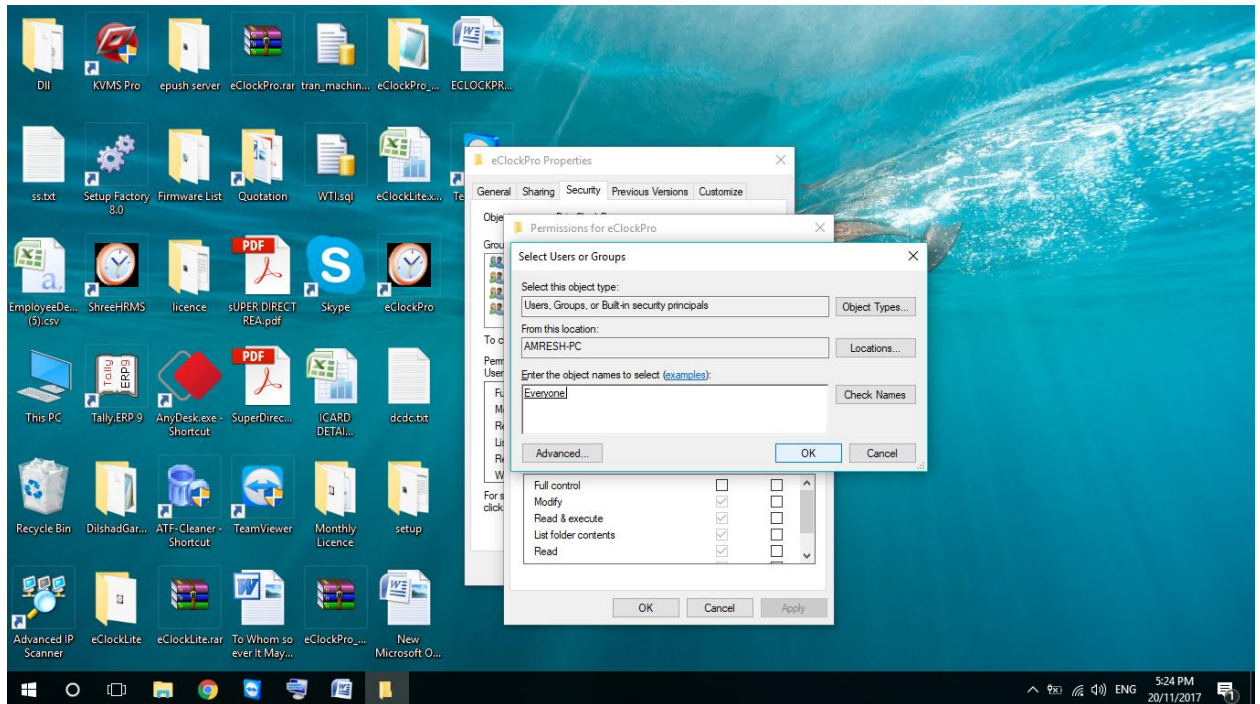
- Click on Edit.



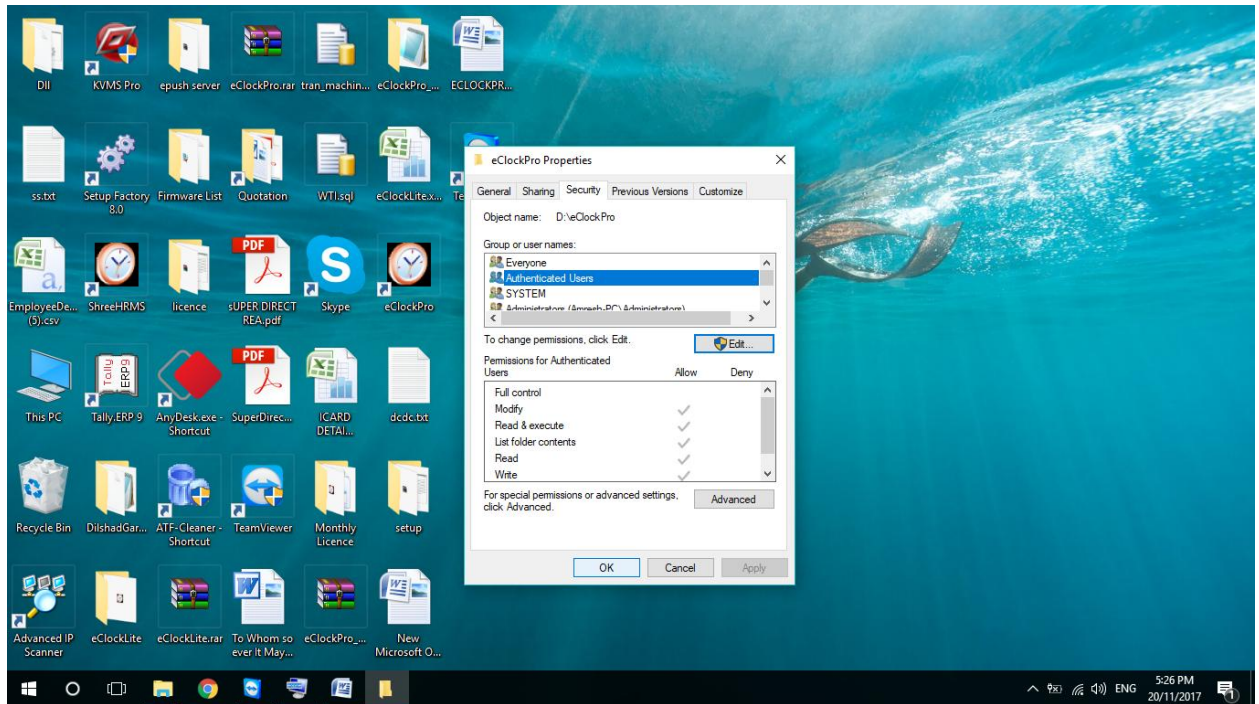
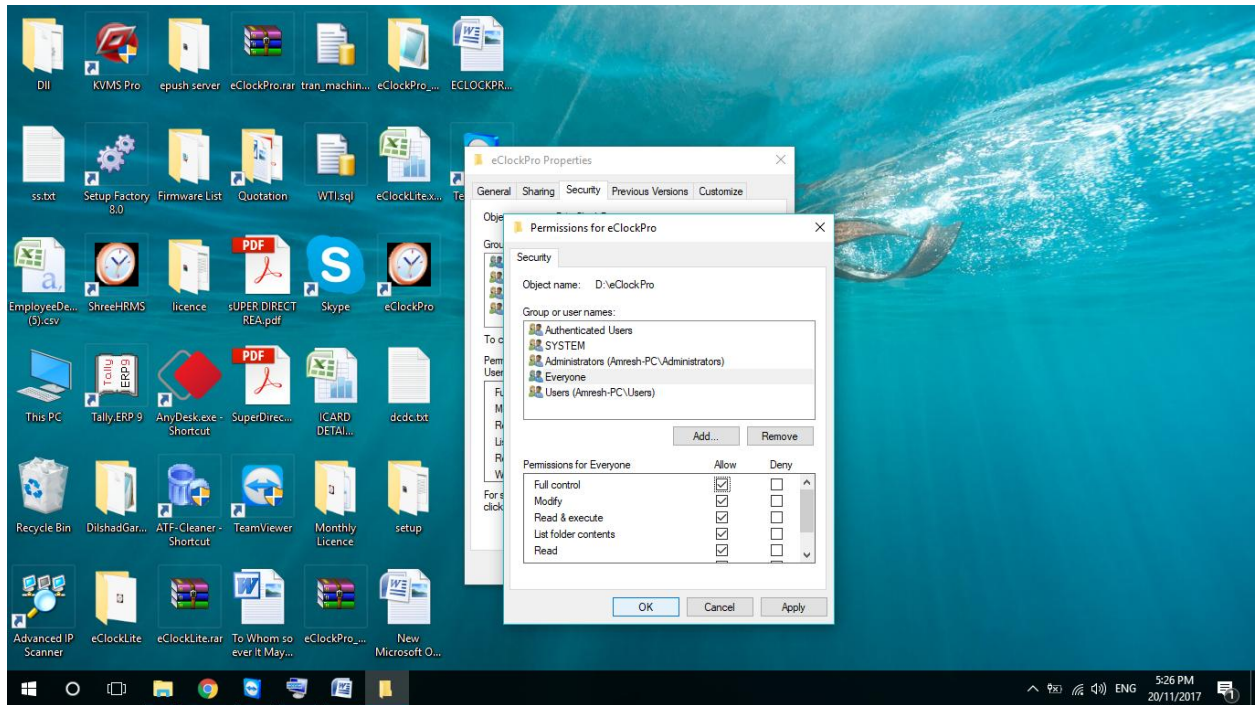
- Click on Add, Write Everyone and click on check names.



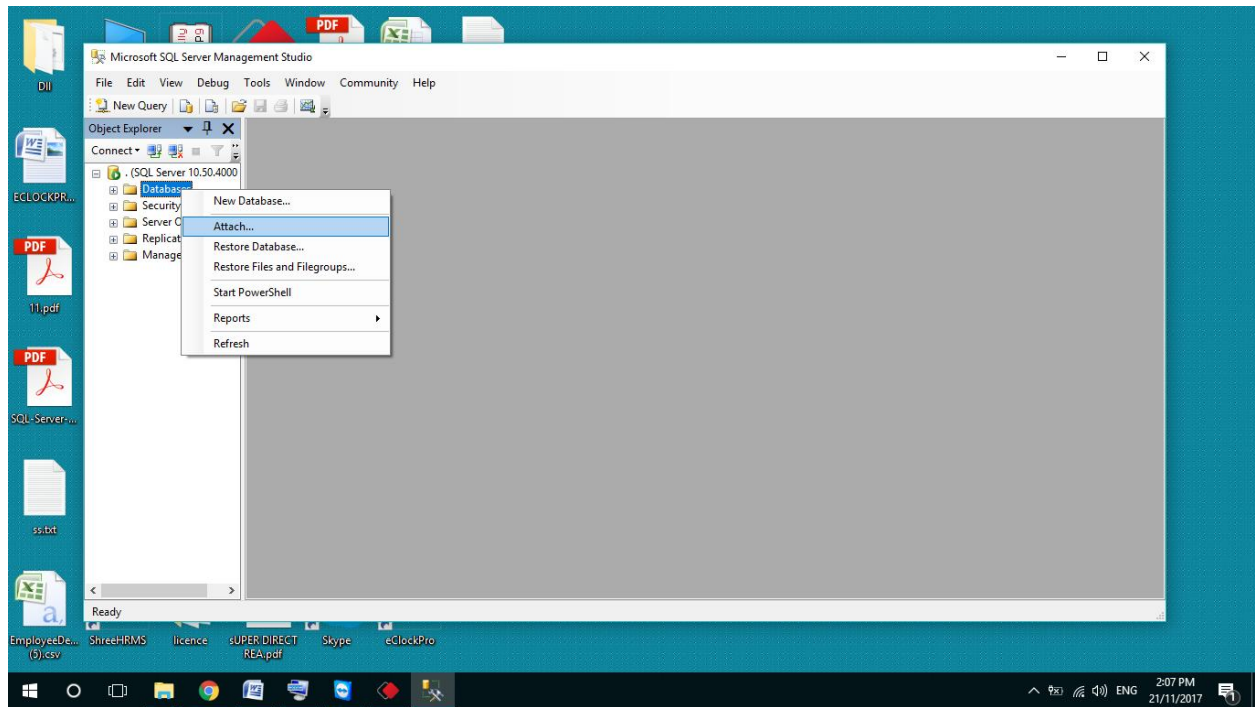
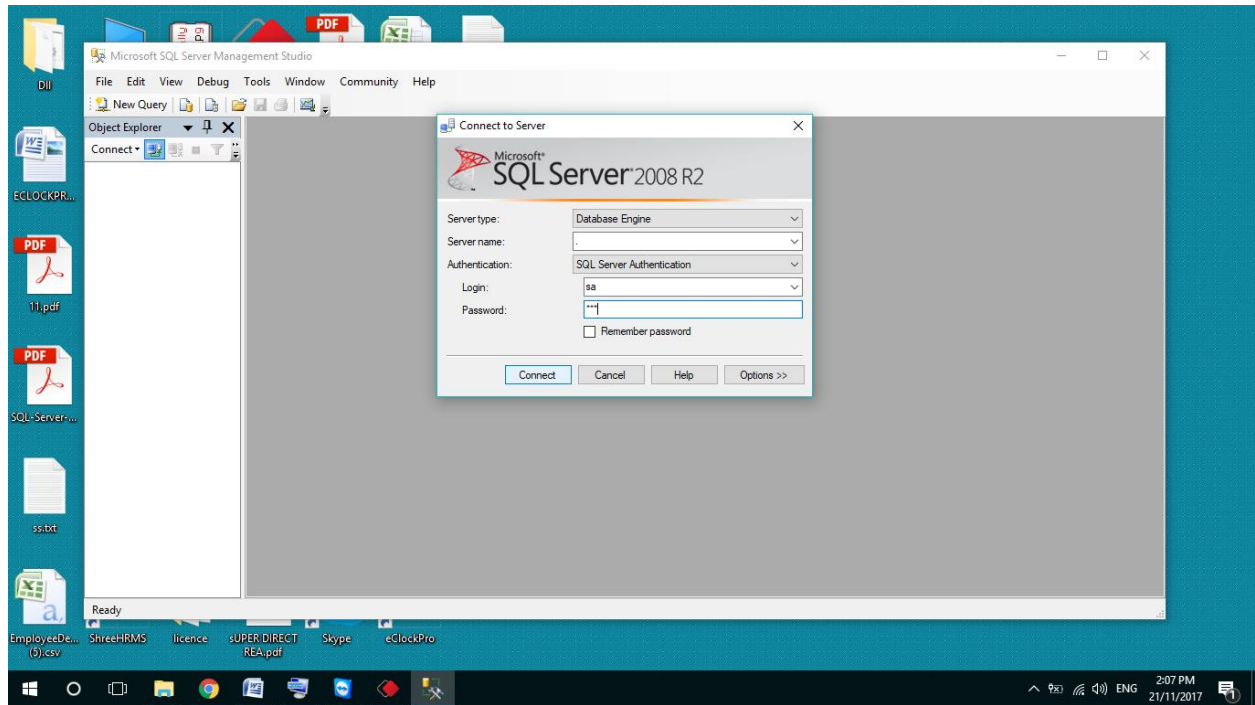
- Click on OK.

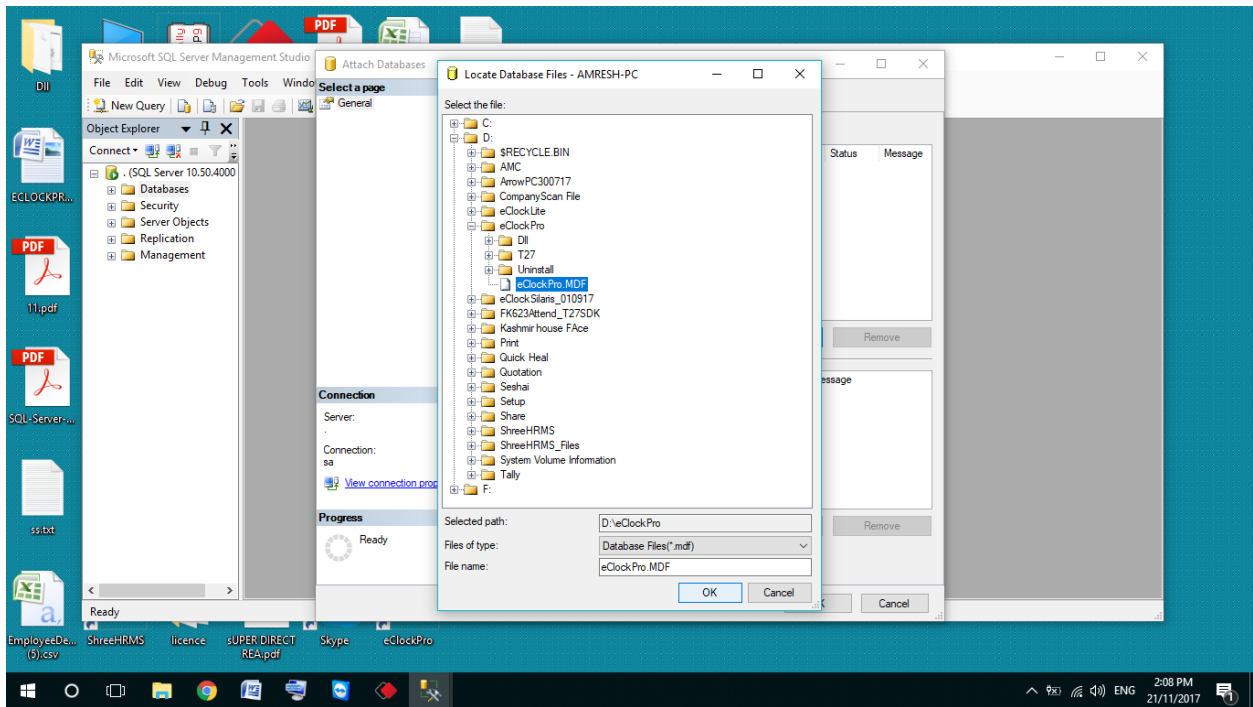
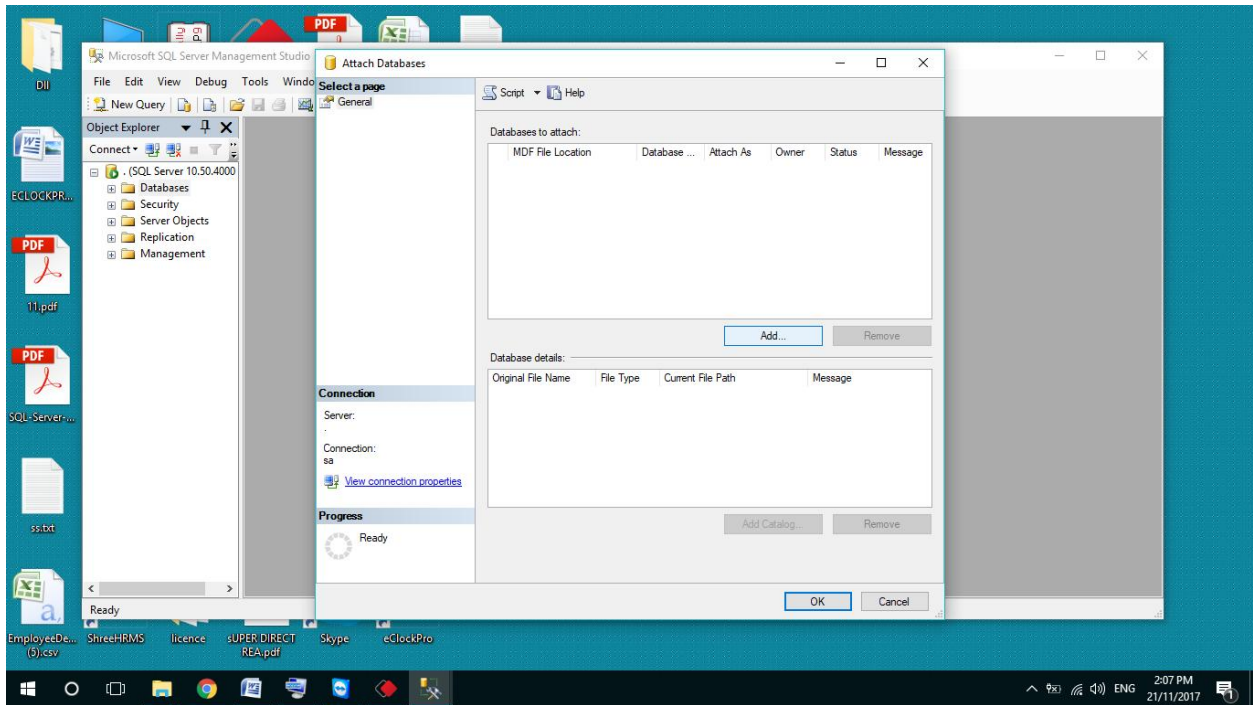


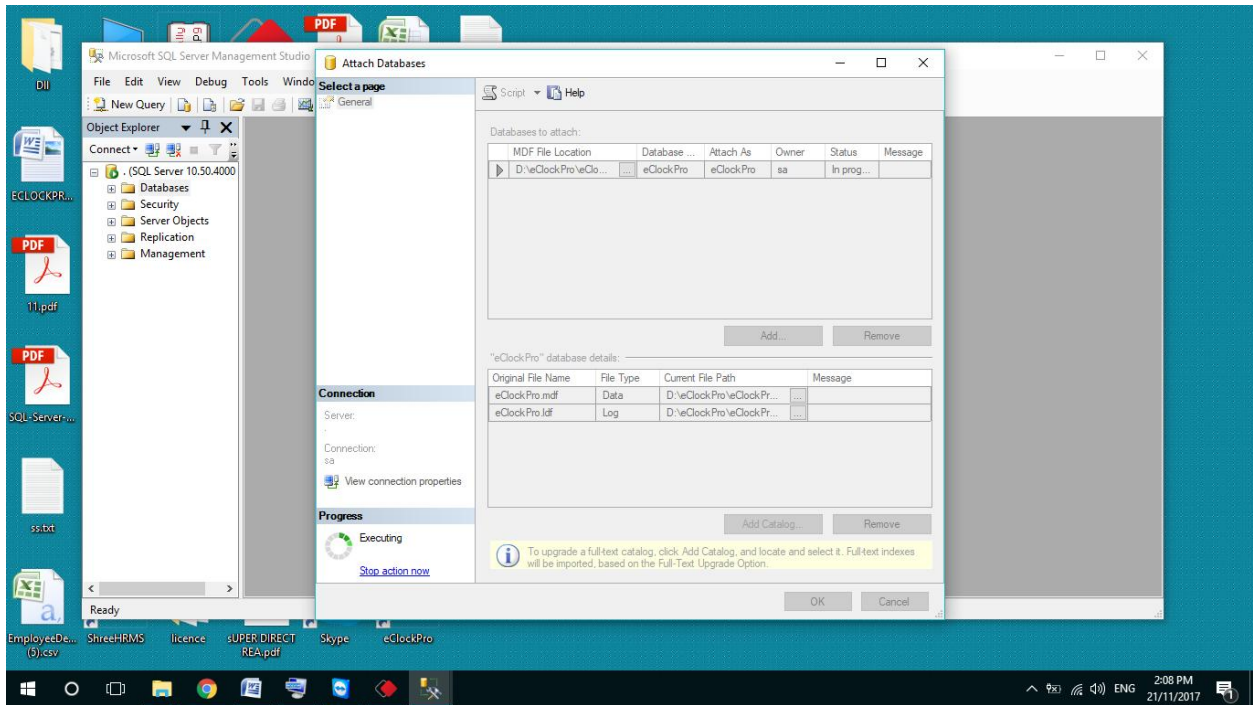
- Give all permissions on the folder and click OK.



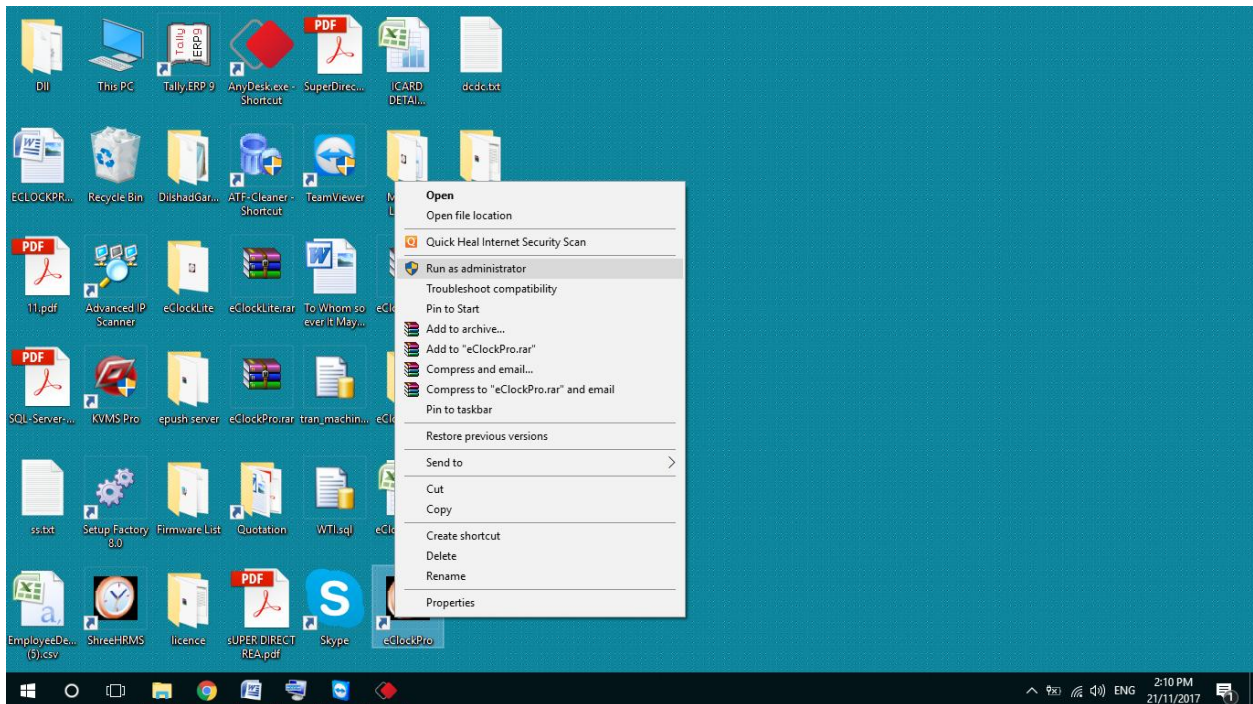
- Now open the sql and attach the database of eclockpro.

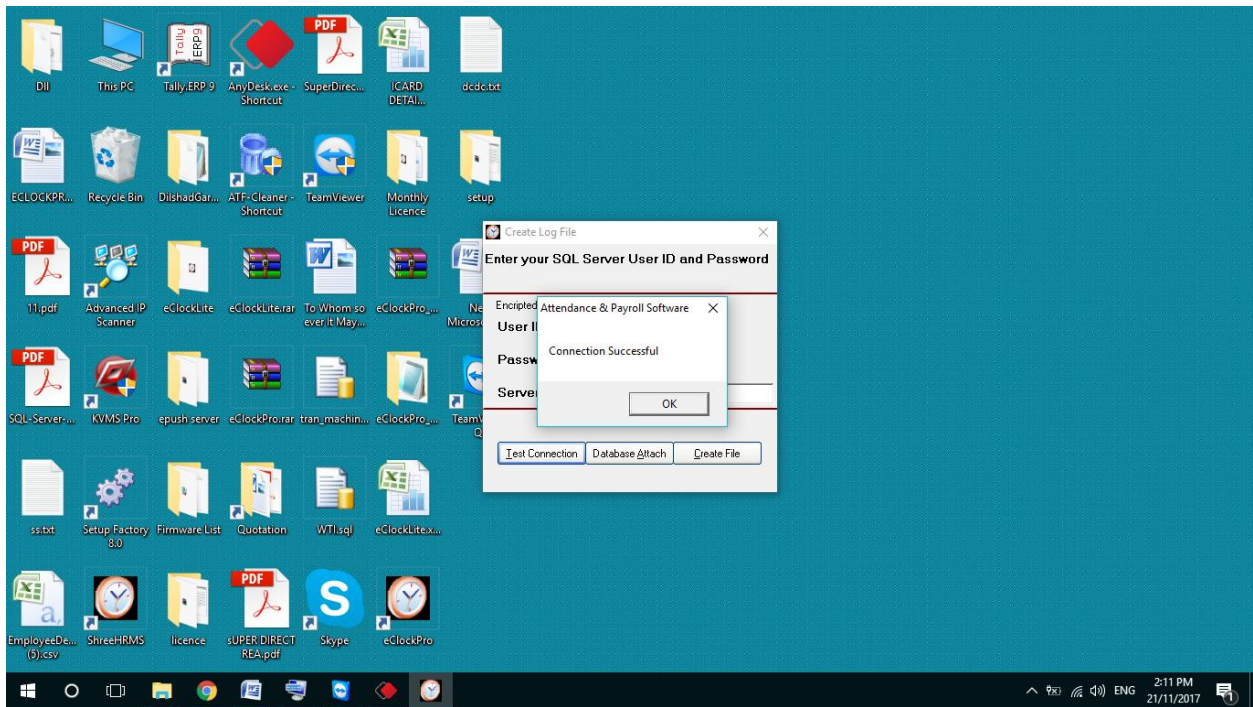
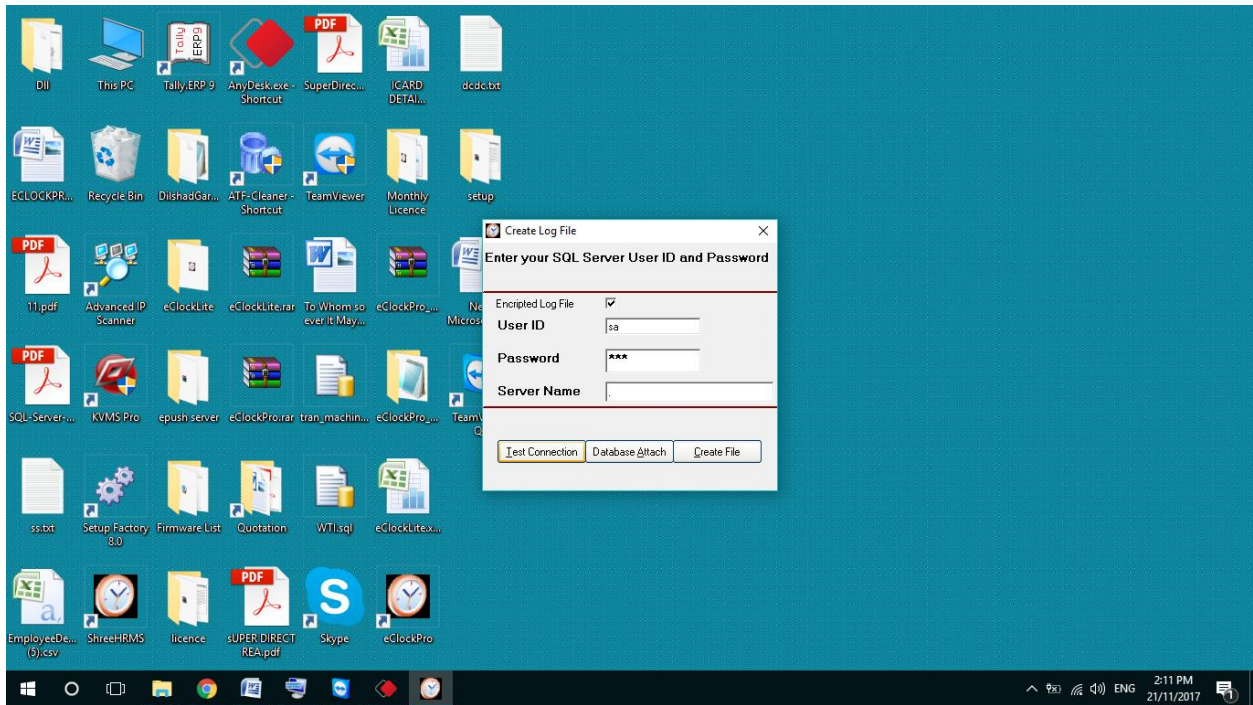


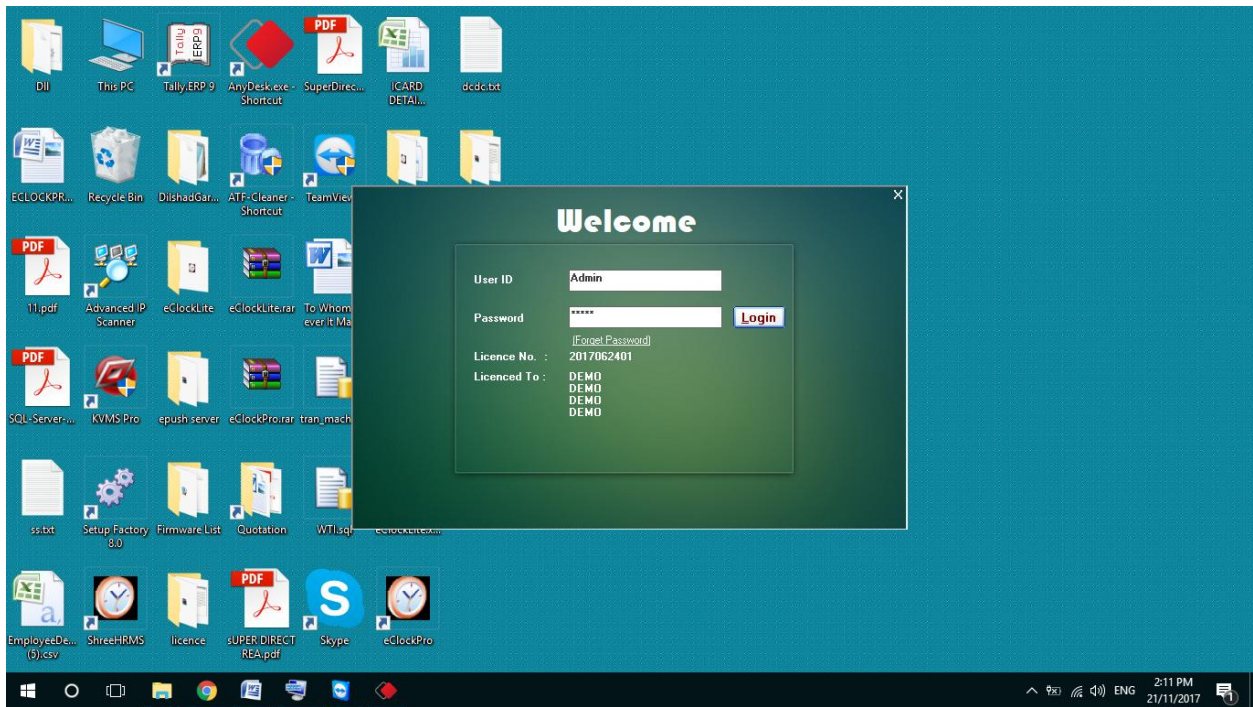
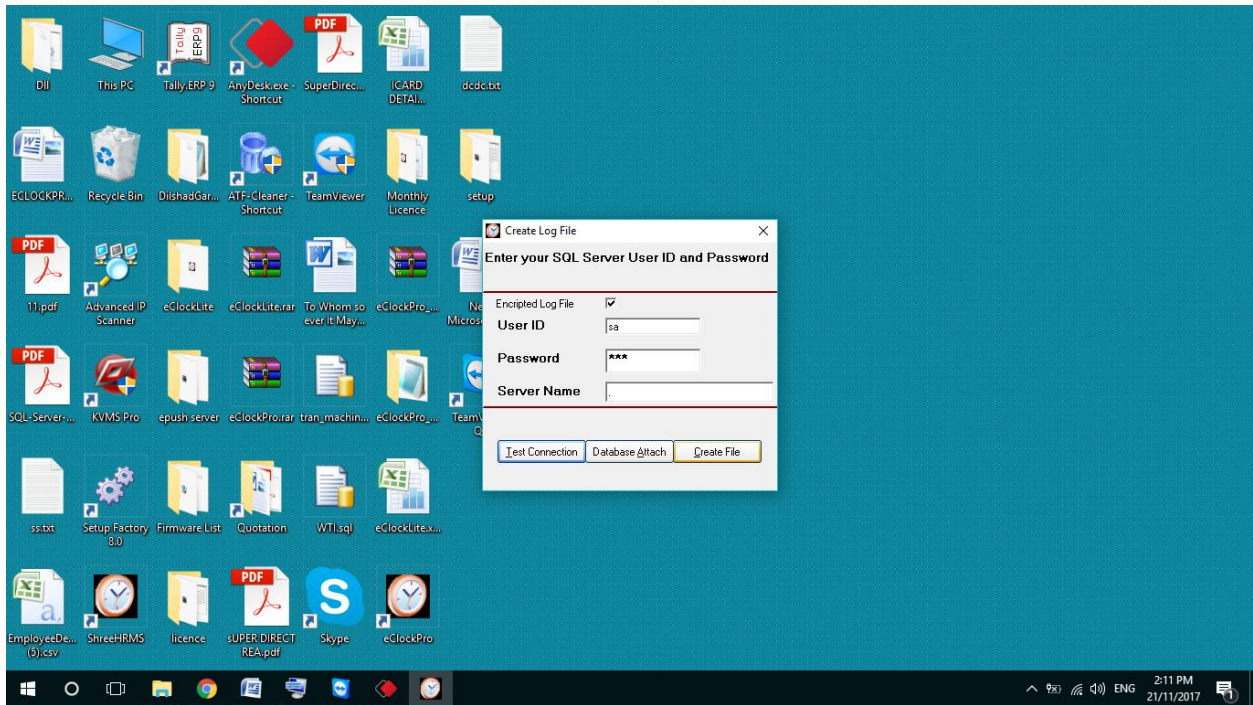




Now right click the eclockpro software and run as administrator.







The login id and password of eclockpro should be admin each and click on login.

